

# Technical data sheet

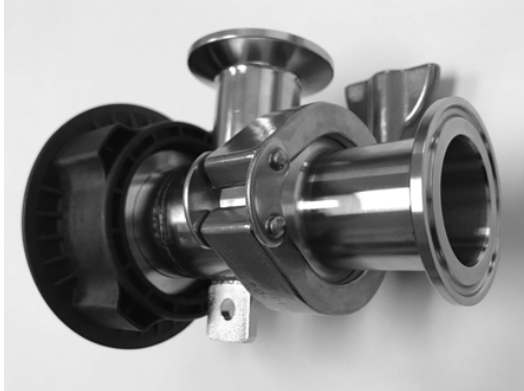
## MINIFLUX FDA




More than just pumps

### MINIFLUX FDA

For use in applications that require a sanitary pump with food grade materials

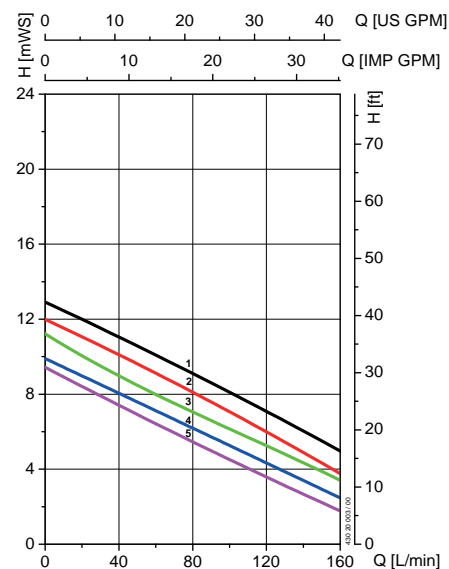


#### Advantages/characteristics:

- ▶ Transfer liquids by use of the bottom port on totes & IBCs
- ▶ Residual quantities of less than 1% (depending on the angle of the container)
- ▶ Great for use wherever it would be difficult to use a vertical drum pump
- ▶ Safe to transfer thin and flammable liquids
- ▶ Can be used with commutator motors, brushless motors and air motors
- ▶ Suitable for hazardous applications that require grounding ATEX zone 1 

Performance data	
Delivery rate max.	63 GPM *
Viscosity max.	1,000 cPs *
Delivery head max.	42.5 ft TDH*
Connection	
At container	1.5" Tri-clamp
Discharge connection	1.5" Tri-clamp
Materials	
Outer tube & rotor	Stainless steel 316 Ti
Mechanical seal	PTFE/carbon and ceramic oxide
Seals	FKM FDA
Impeller	ETFE
General datas	
Total length	5.4" (136 mm)
Weight	2.2 lbs
Ex-marking	II 2G c IIB TX
Media-/ambient temperature max.	212°F/100°C (ATEX max. 104°F/40°C)
Part number	
MINIFLUX	FLU.20 001

#### Performance chart

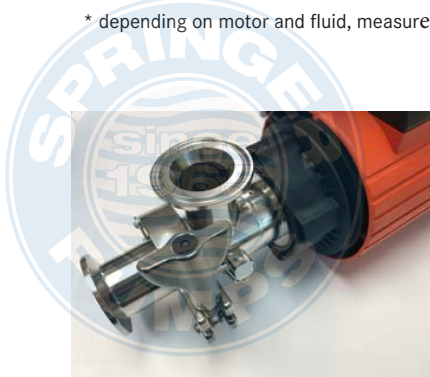


measured at free outlet, water 68°F (20°C), values ± 10 %

#### Motor:

1. F 416 Ex
2. F 457/F 458-1/F 460-1 Ex
3. FBM 4000 Ex
4. FEM 4070
5. F 458/F 460 Ex

\* depending on motor and fluid, measured at free outlet



Shown with F457 Electric Motor



Shown with F416-1 Air Motor

#### FLUX PUMPS CORPORATION

300 Townpark Drive, Suite 130  
 Kennesaw, GA 30144, USA  
 Phone 800-367-3589  
 info@fluxpumpsusa.com  
 www.fluxpumpsusa.com