



**I Application**

The SLRT pump is a positive displacement rotary lobe pump designed to discharge food and sanitary products from a truck cistern as it can be driven by a hydraulic motor. The pump is characterised by a compact design, reduced weight and interchangeable connections to facilitate its assembly to a truck. The SLRT pump is designed to pump liquid products with or without delicate solid particles that require gentle pumping causing no damage to the product.

**I Design and features**

The SLRT rotary lobe pumps basically consist of bi-lobe rotors which rotate synchronously inside a casing without touching each other. As the rotors rotate, the spaces between the lobes and the casing are successively filled with the product and a fixed amount of the displaced product is conveyed to the discharge nozzle. The pumped product forms a continuous flow thanks to the clearances between the lobes and the pump casing, thus, ensuring an efficient pumping.

The pump casing and the lobes are manufactured in stainless steel. The design of the attachments of the lobes is sanitary. The shaft is hollow with spline SAE 6B 1". The SLRT rotary lobe pump is supplied with a sanitary mechanical seal. It is characterised by easily cleaning and maintenance.

**I Technical specifications**

*Materials:*

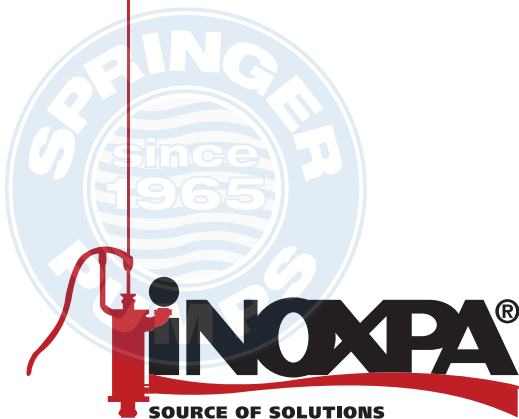
|                                   |           |
|-----------------------------------|-----------|
| Parts in contact with the product | AISI 316L |
| Support                           | GG 25     |
| Legs                              | AISI 304  |
| Gaskets                           | EPDM      |

*Mechanical seal:*

|                 |      |
|-----------------|------|
| Rotary part     | SiC  |
| Stationary part | C    |
| Gaskets         | EPDM |

|                         |           |
|-------------------------|-----------|
| Internal surface finish | Ra<0,8 µm |
| External surface finish | Matt      |

|              |                                   |
|--------------|-----------------------------------|
| Connections: | DIN (interchangeable connections) |
|--------------|-----------------------------------|



**I Technical specifications**

Operating limits:

|                             |                      |            |
|-----------------------------|----------------------|------------|
| Maximum flow                | 63 m <sup>3</sup> /h | 277 US GPM |
| Maximum pressure            | 7 bar                | 102PSI     |
| Maximum working temperature | 120 °C               | 248 °F     |
| Maximum speed               | 950 rpm              |            |
| Weight                      | 70 kg                |            |

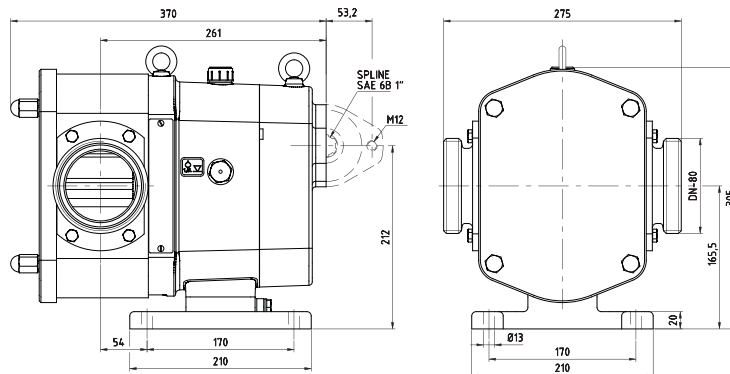


**I Options**

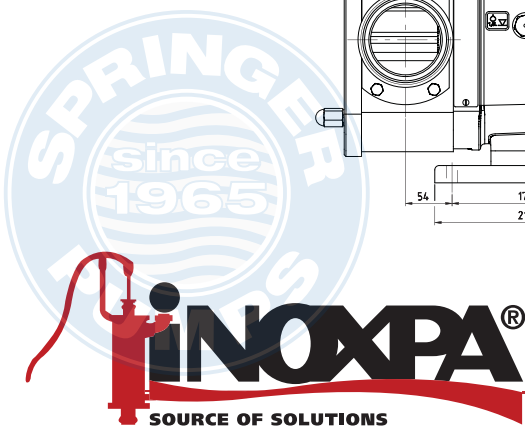
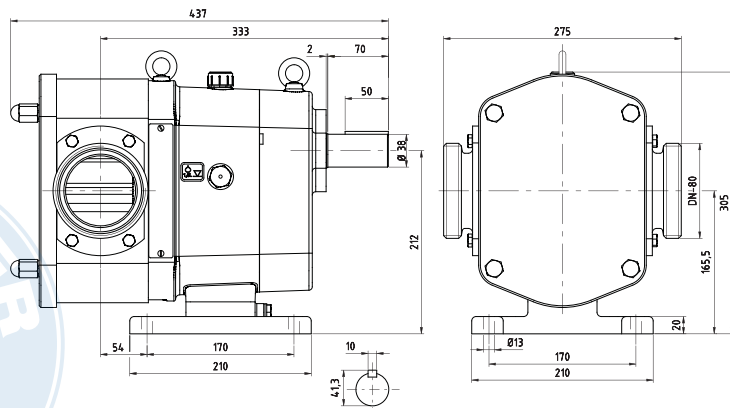
- Mechanical seal: SiC/SiC or TungC/SiC.
- Shaft seal: PTFE.
- Gasket: FPM.
- Relief valve on the front cover or external bypass.
- Bare shaft for electrical drive.
- Vertical support.
- Connections: Clamp, SMS, RJT, etc.
- Heating jacket.

**I Dimensions**

Pump designed for hydraulic drive



Pump with bare shaft



The information is for guidance only. We reserve the right to modify any material or feature without notice in advance. Photos are not binding. For further information, please, consult our web site. [www.inoxpa.com](http://www.inoxpa.com)



FT.SLRT.1.EN-0514