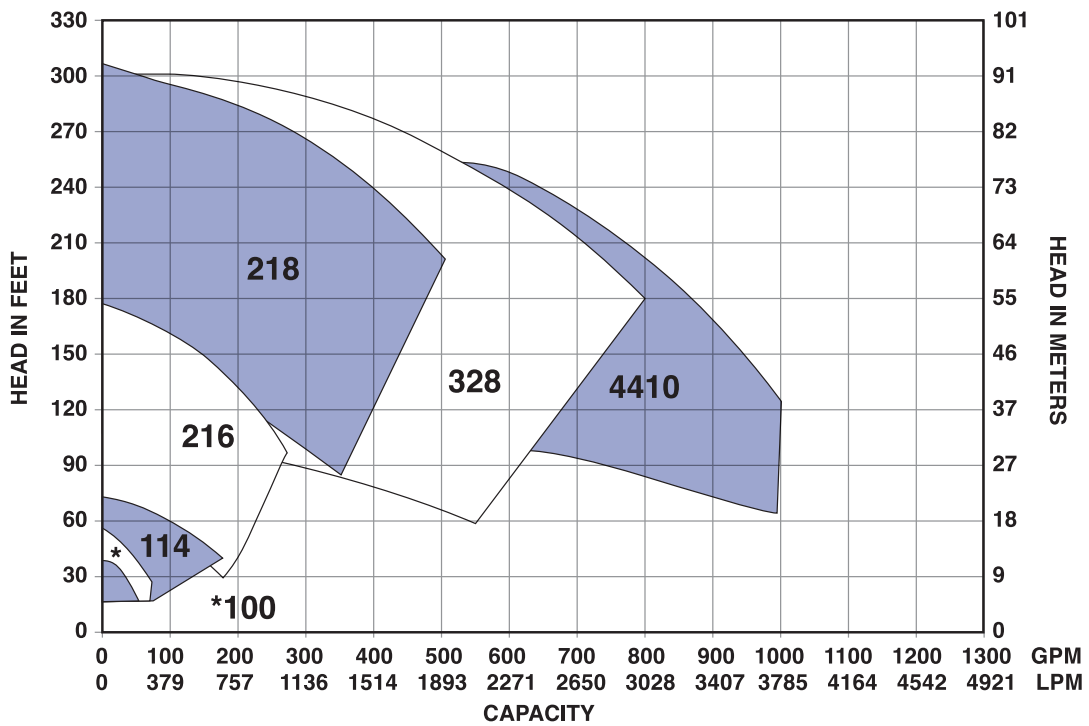


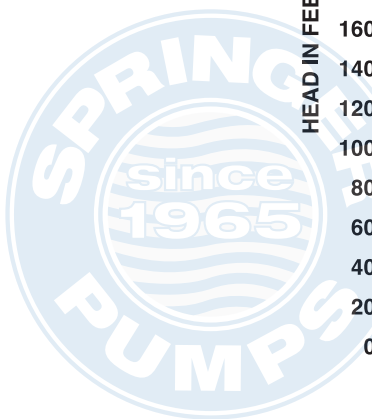
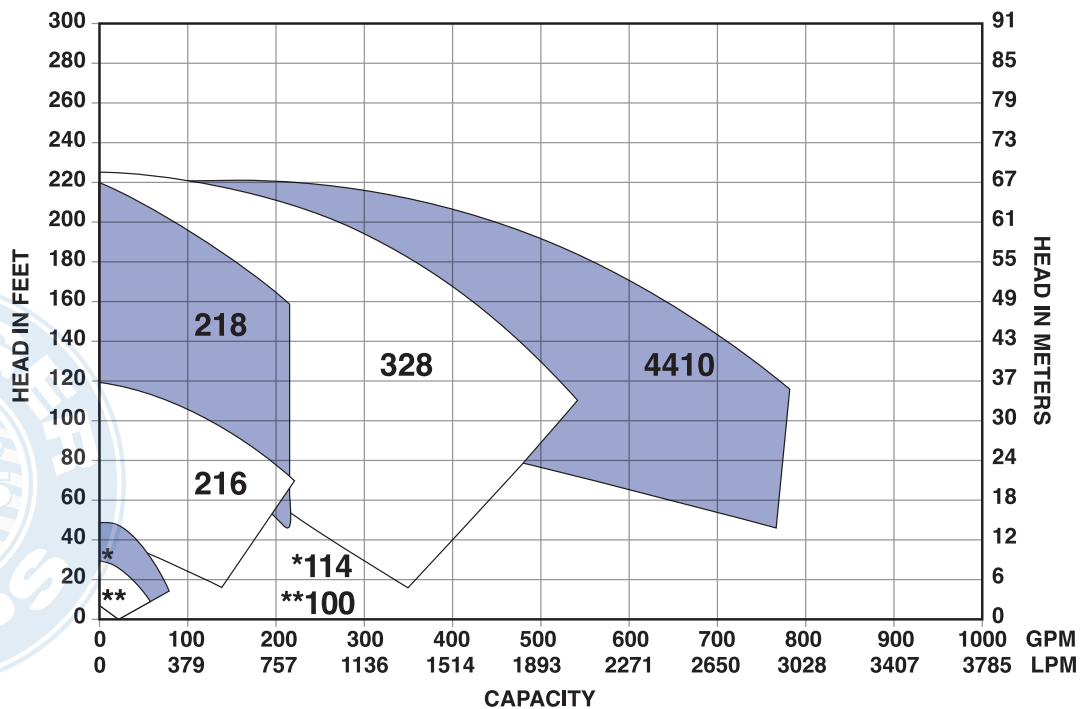


COMPOSITE CURVES

QC 3500 RPM



QC 2900 RPM

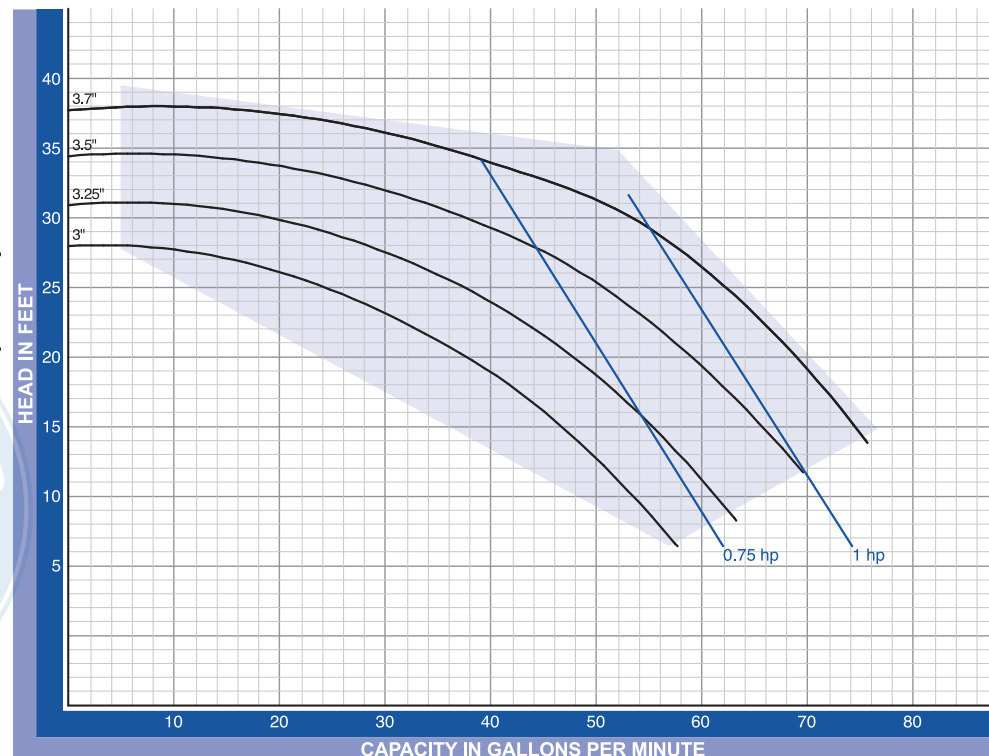
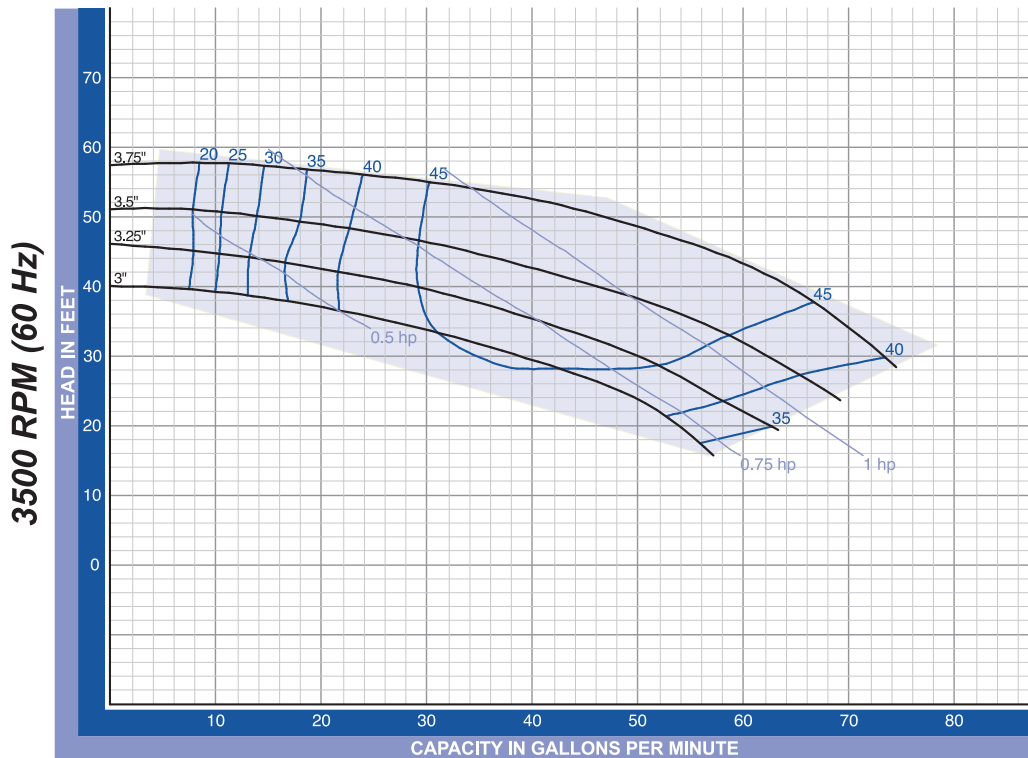


QC 100 1.5" x 1.0" Standard Inlet



QC -100 Inlet 1 1/2" x Outlet 1". The curves are based testing water at 70° F and have a tolerance of ±5% applicable to all of them. For different operation conditions please contact us.

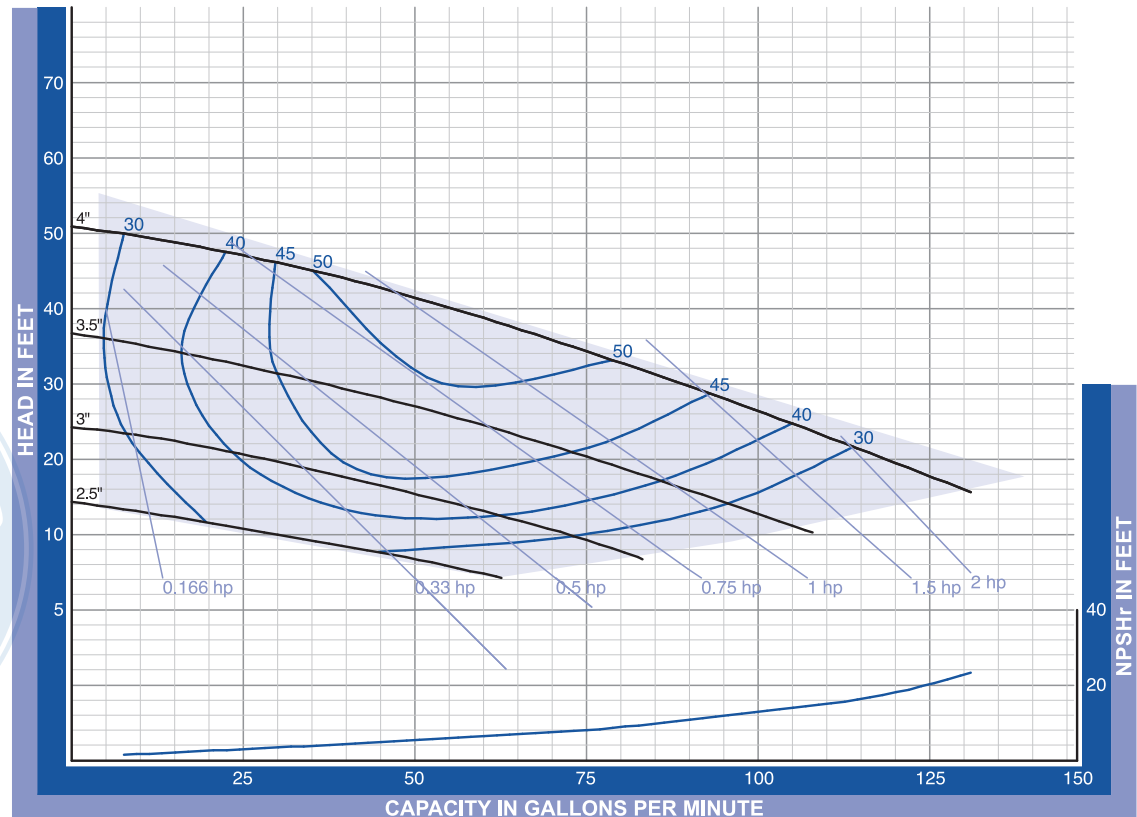
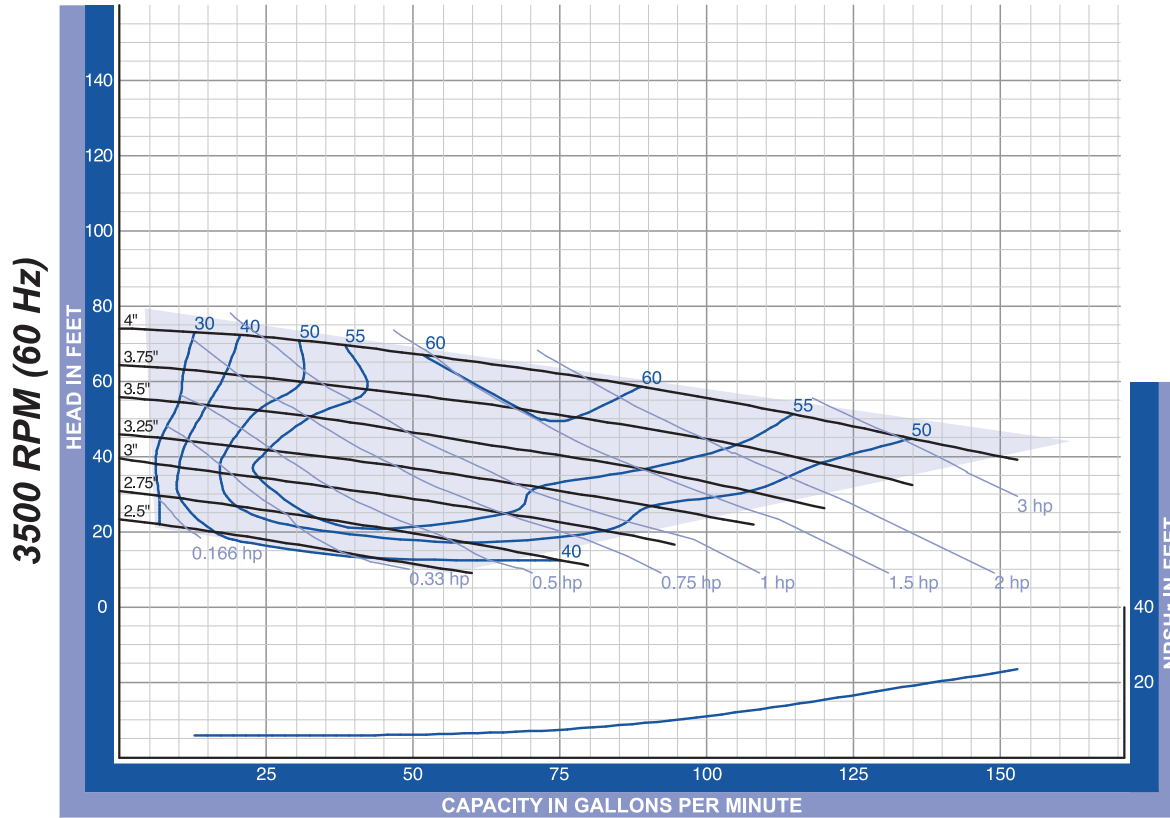
The impeller diameter is in inches.





QC 114 1.5" x 1.5" Standard Inlet

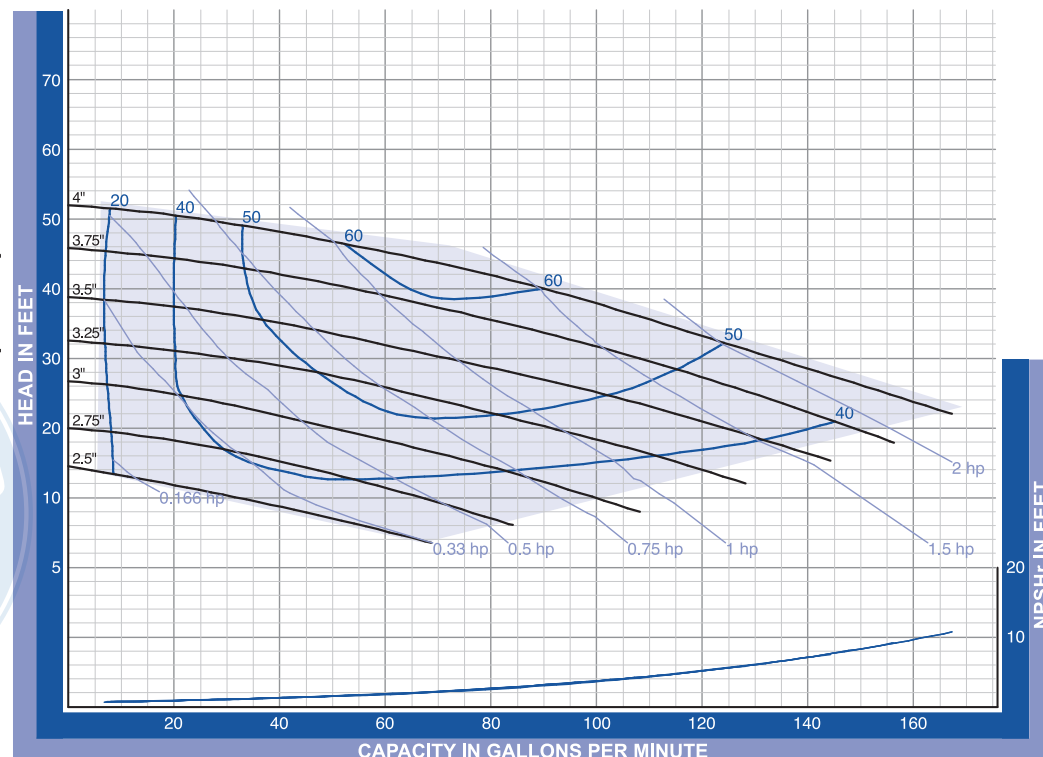
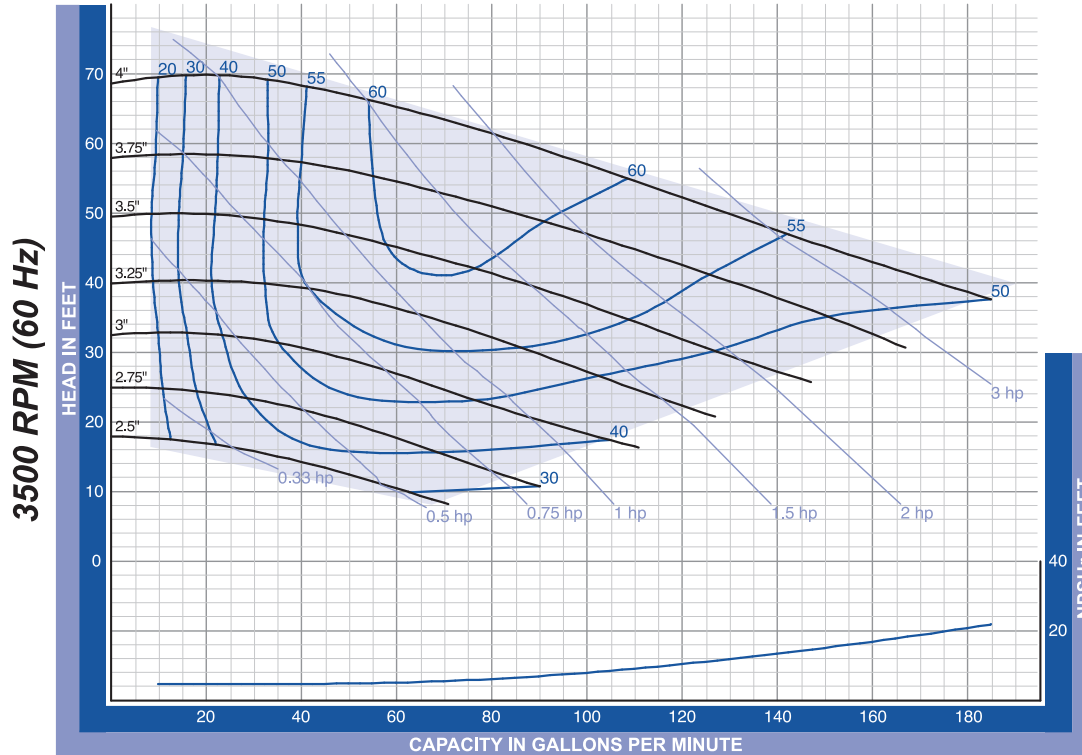
QC -114 Inlet 1 1/2" x Outlet 1 1/2". The curves are based testing water at 70° F and have a tolerance of ±5% applicable to all of them. For different operation conditions please contact us. The impeller diameter is in inches.





QC 114 2.0" x 1.5" Enlarged Inlet

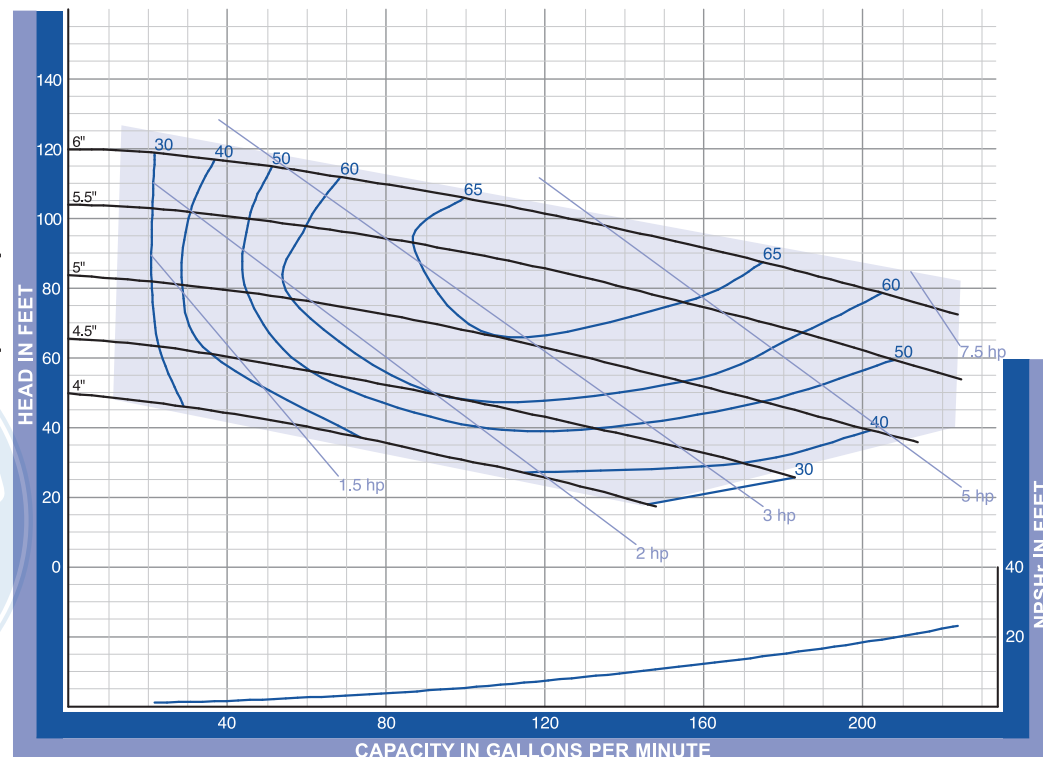
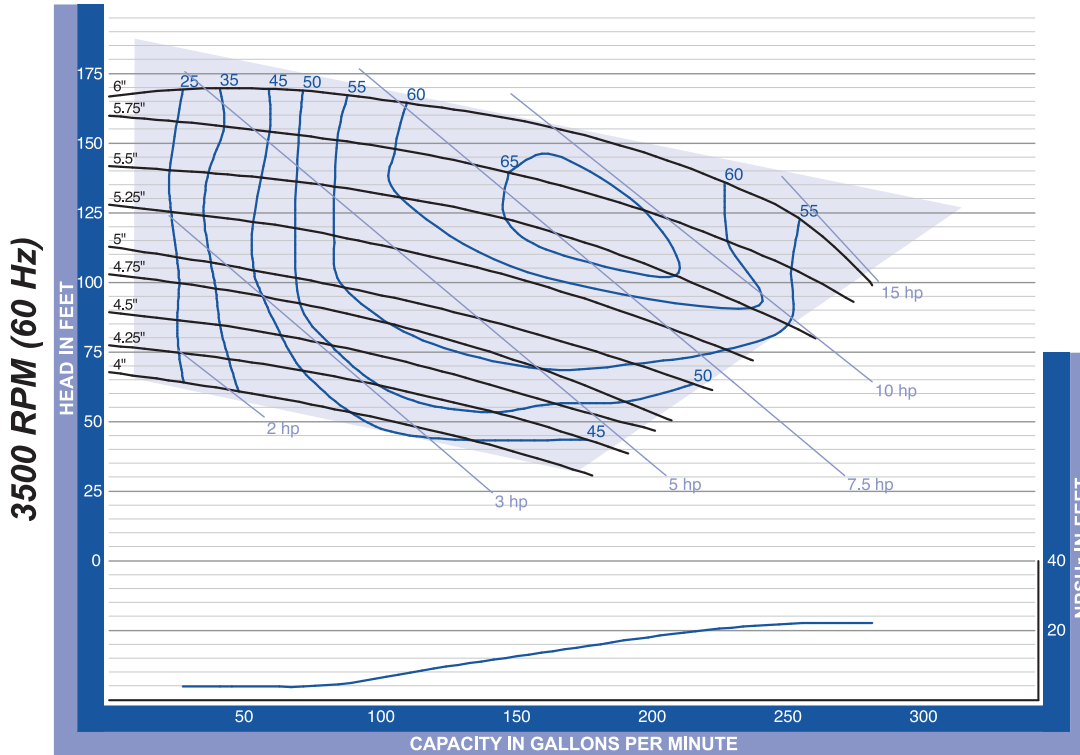
QC -114 Inlet 2" x Outlet 1/2". The curves are based testing water at 70° F and have a tolerance of ±5% applicable to all of them. For different operation conditions please contact us. The impeller diameter is in inches.





QC 216 2.0" x 1.5" Standard Inlet

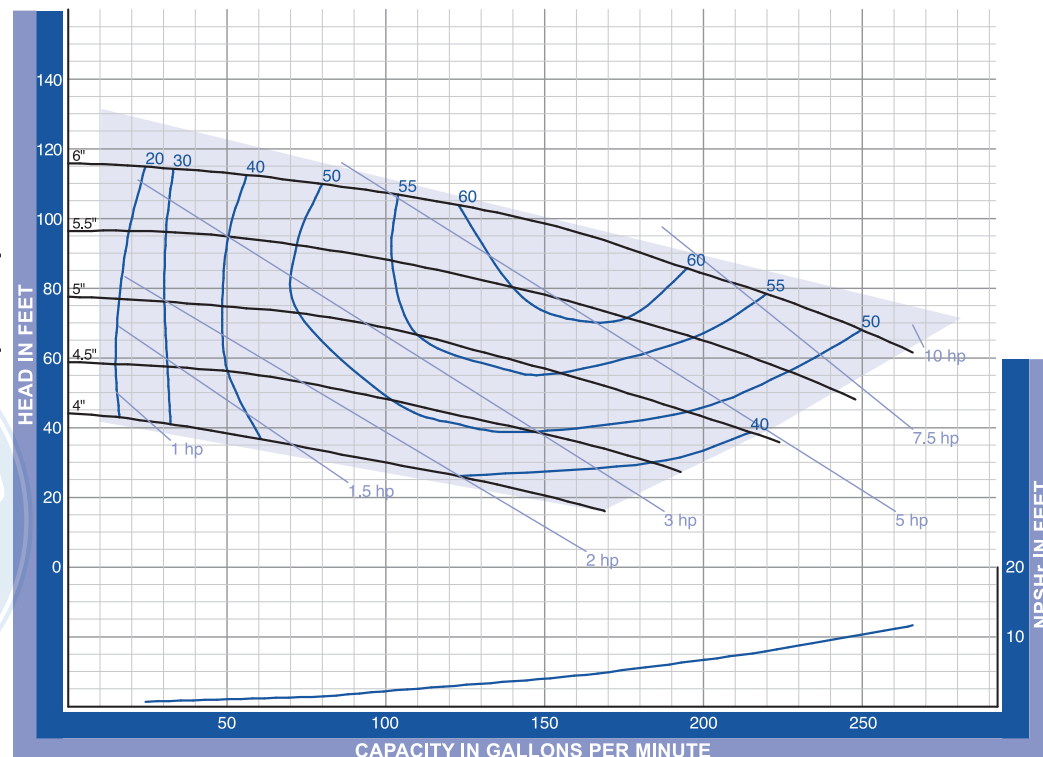
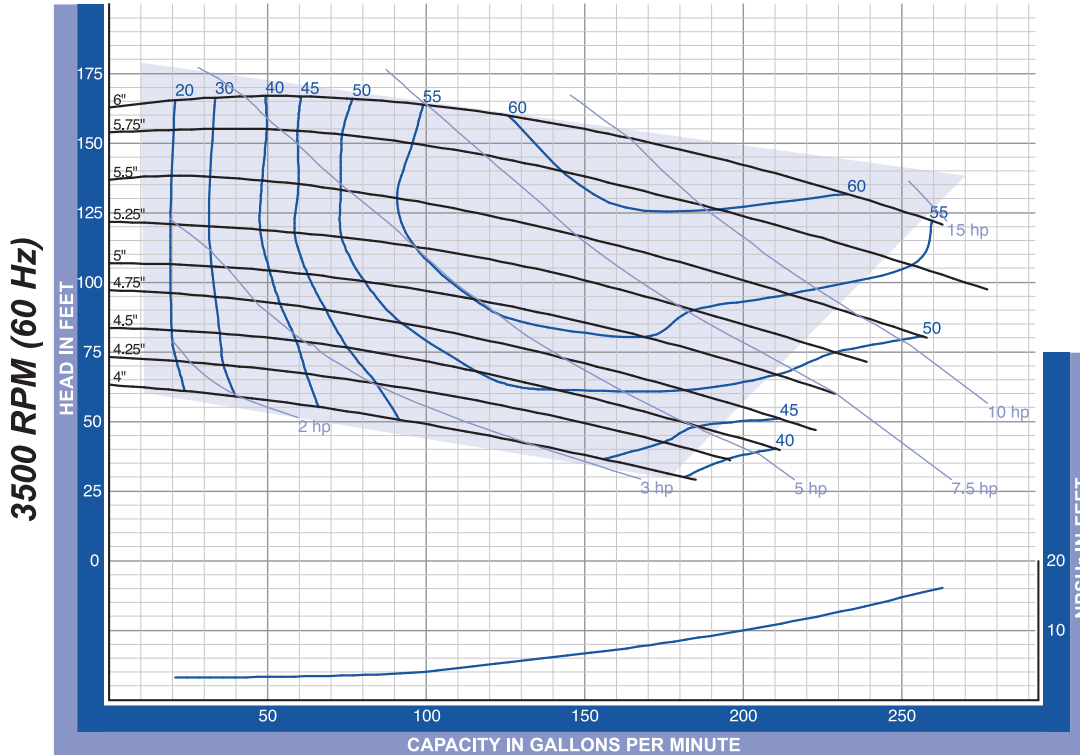
QC -216 Inlet 2" x Outlet 1 1/2". The curves are based testing water at 70° F and have a tolerance of ±5% applicable to all of them. For different operation conditions please contact us. The impeller diameter is in inches.





QC 216 2.5" x 1.5" Enlarged Inlet

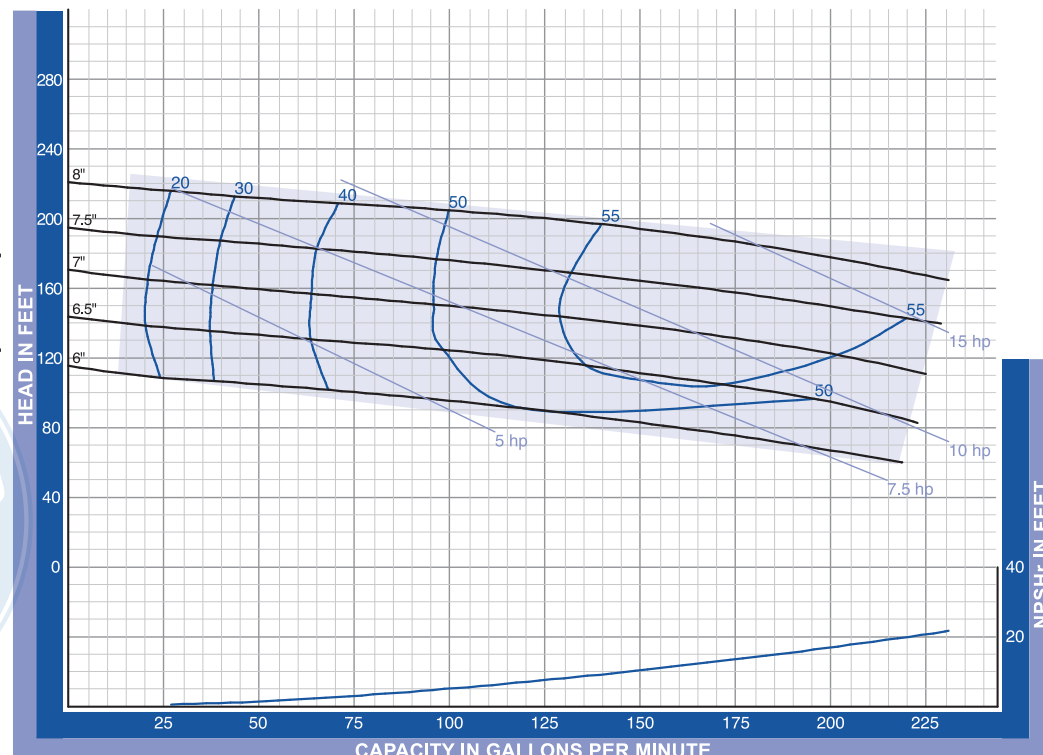
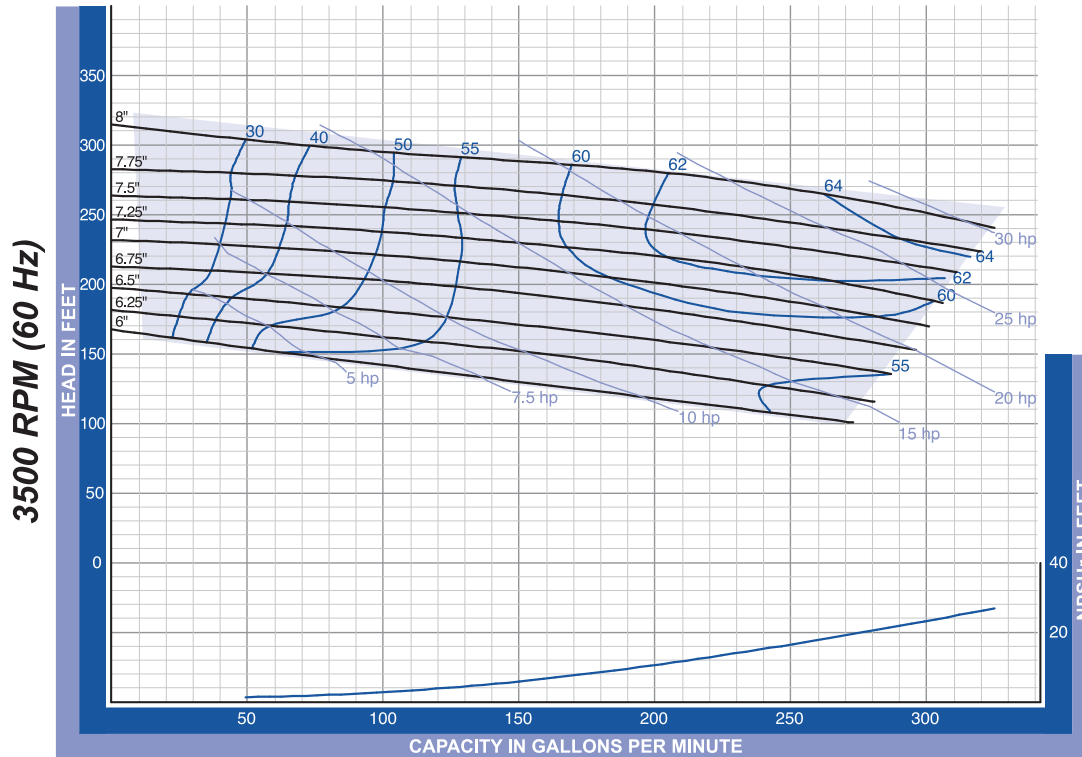
QC - 216 Inlet 2 1/2" x Outlet 1 1/2". The curves are based testing water at 70° F and have a tolerance of ±5% applicable to all of them. For different operation conditions please contact us. The impeller diameter is in inches.





QC 218 2.0" x 1.5" Standard Inlet

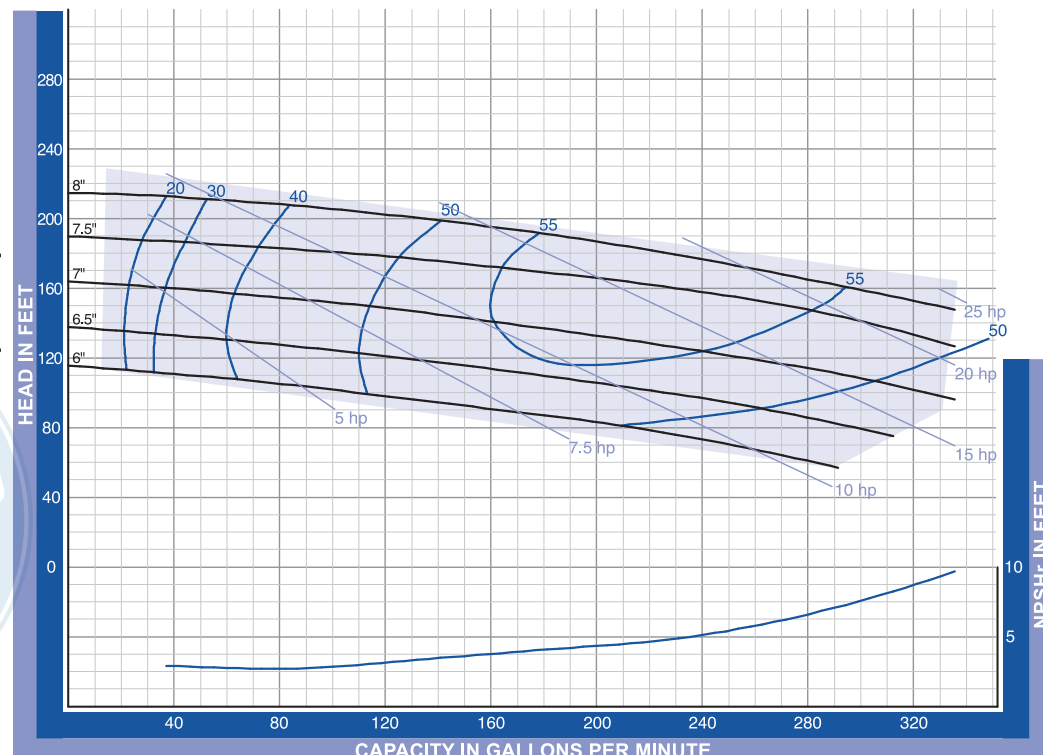
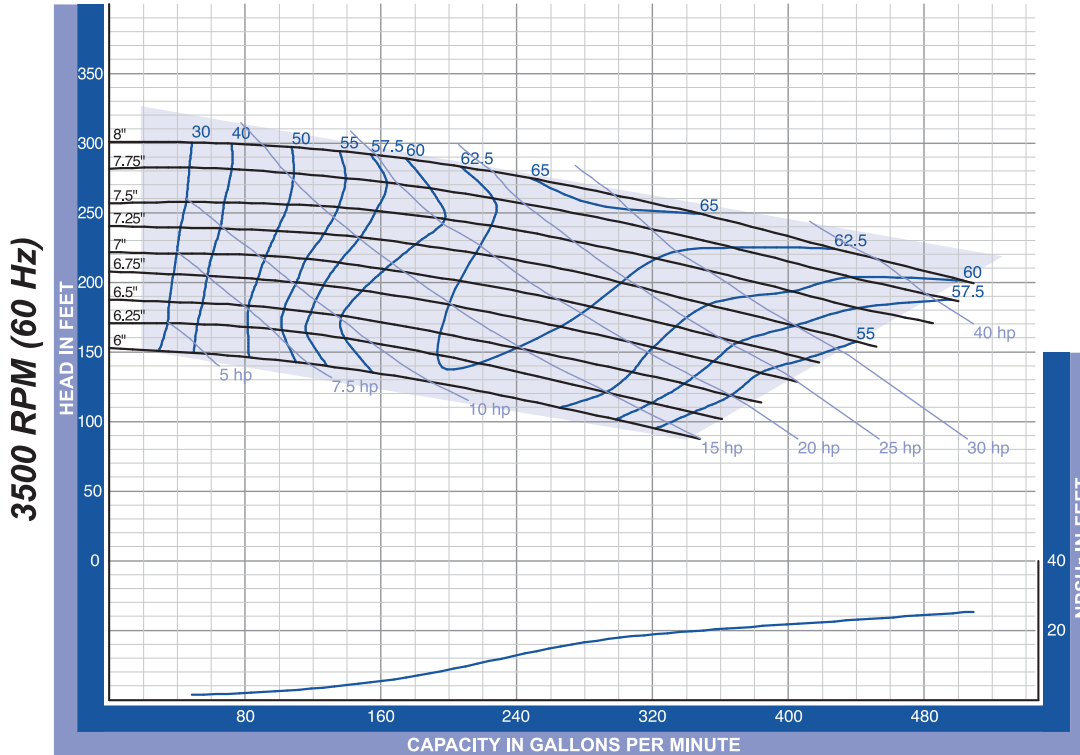
QC - 218 Inlet 2" x Outlet 1 1/2". The curves are based testing water at 70° F and have a tolerance of ±5% applicable to all of them. For different operation conditions please contact us. The impeller diameter is in inches.





QC 218 3.0" x 1.5" Enlarged Inlet

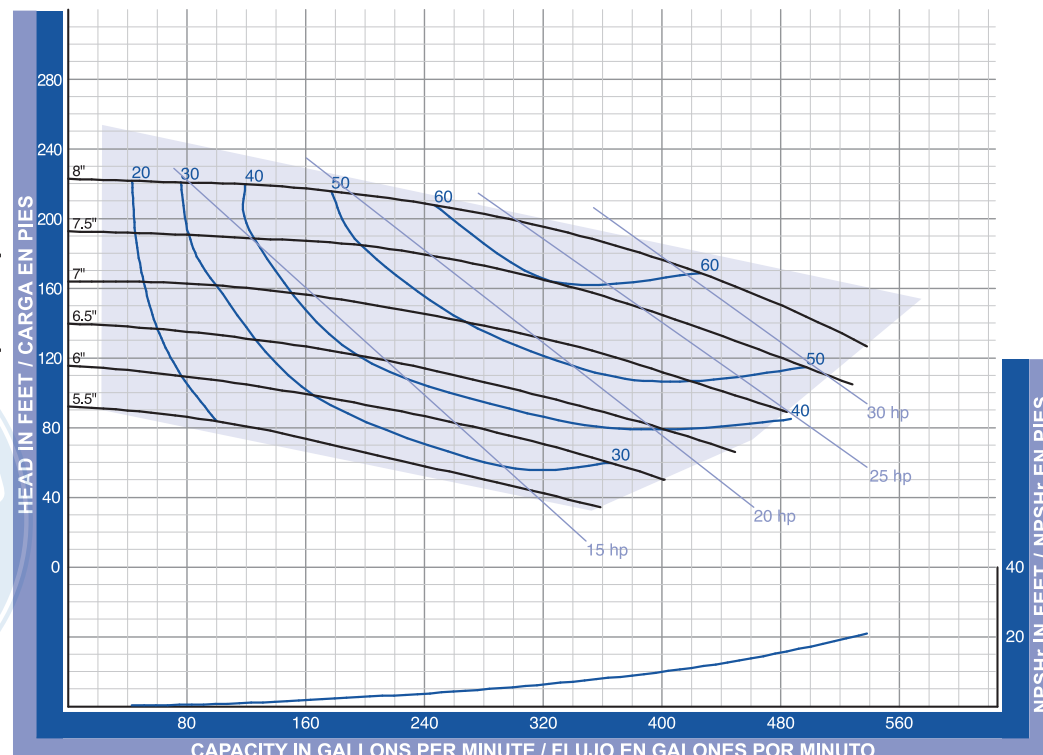
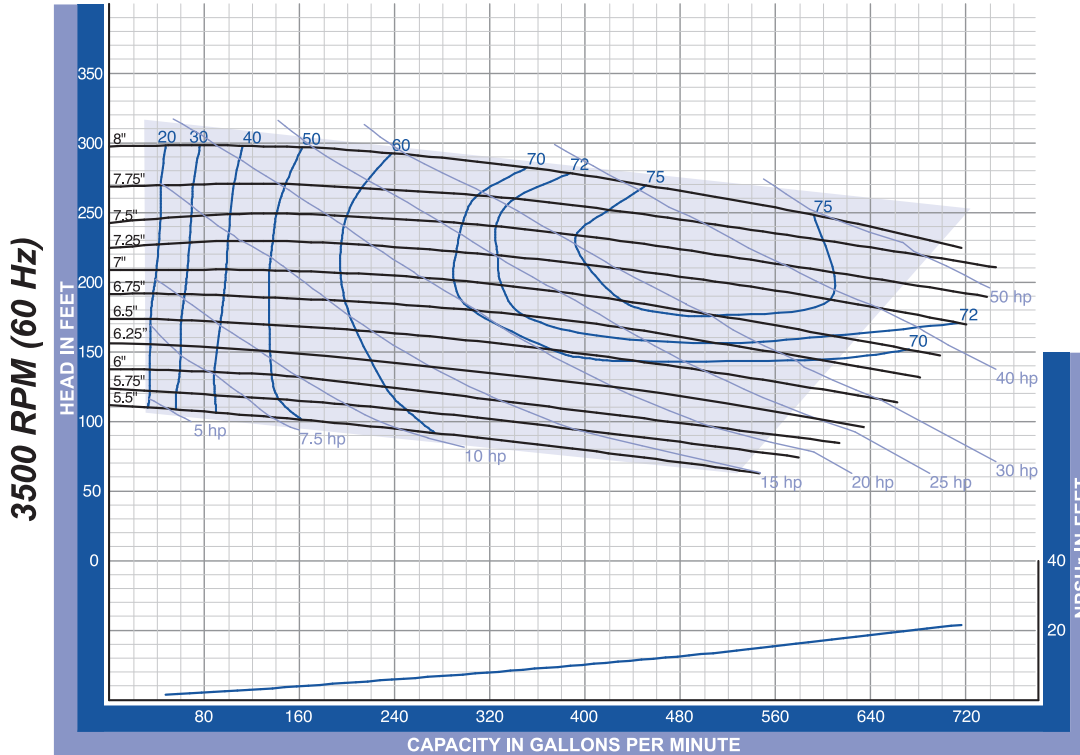
QC- 218 Inlet 3" x Outlet 1 1/2". The curves are based testing water at 70° F and have a tolerance of ±5% applicable to all of them. For different operation conditions please contact us. The impeller diameter is in inches.





QC 328 3.0" x 2.0" Standard Inlet

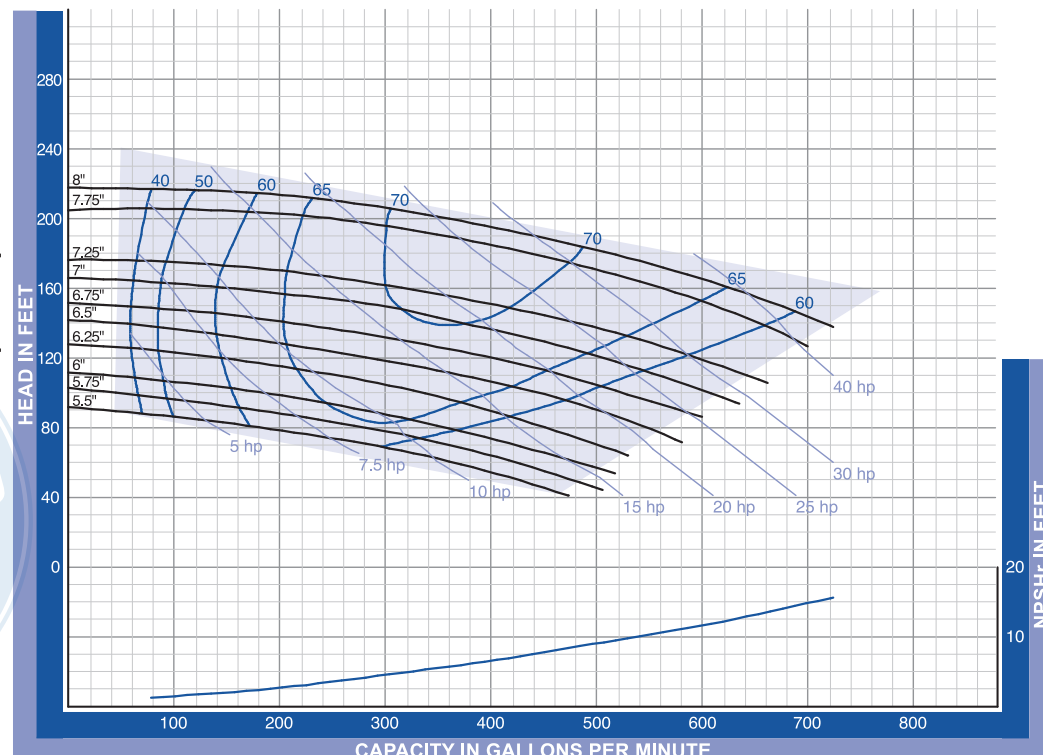
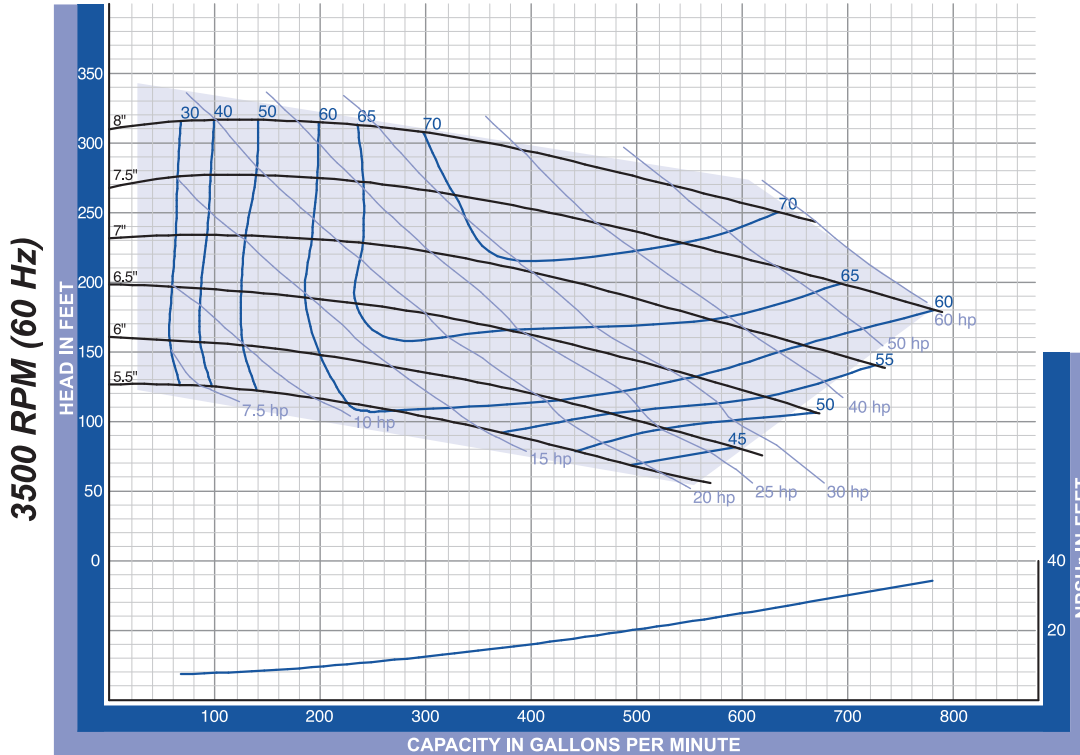
QC - 328 Inlet 3" x Outlet 2". The curves are based testing water at 70° F and have a tolerance of $\pm 5\%$ applicable to all of them. For different operation conditions please contact us. The impeller diameter is in inches.





QC 328 4.0" x 2.0" Enlarged Inlet

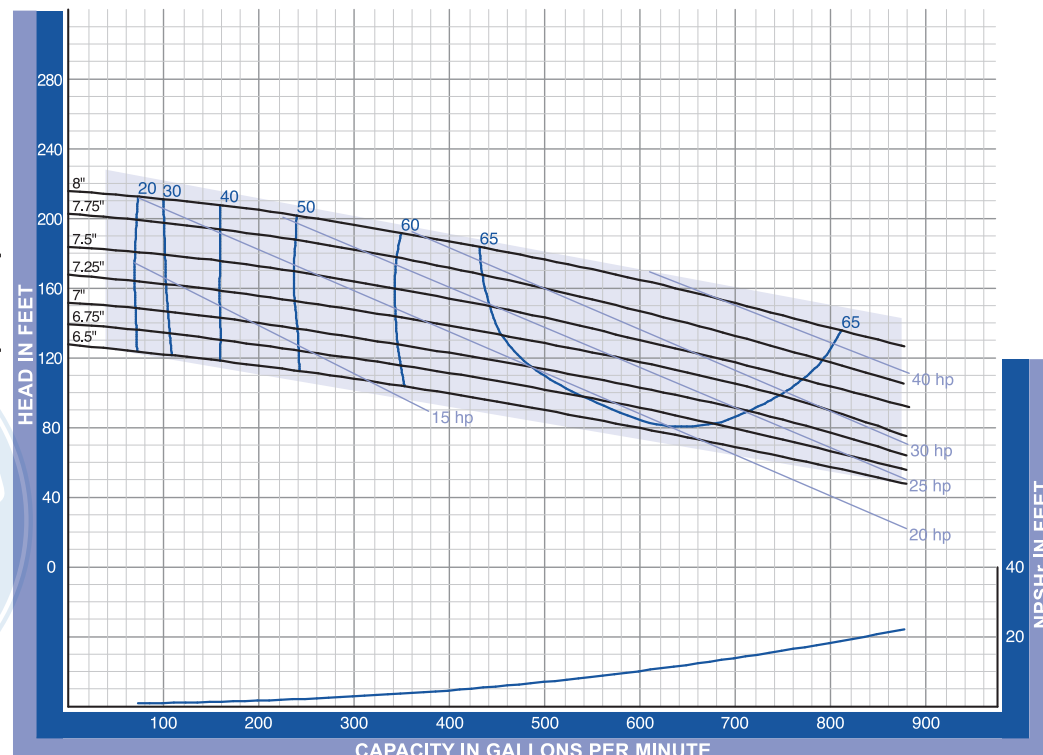
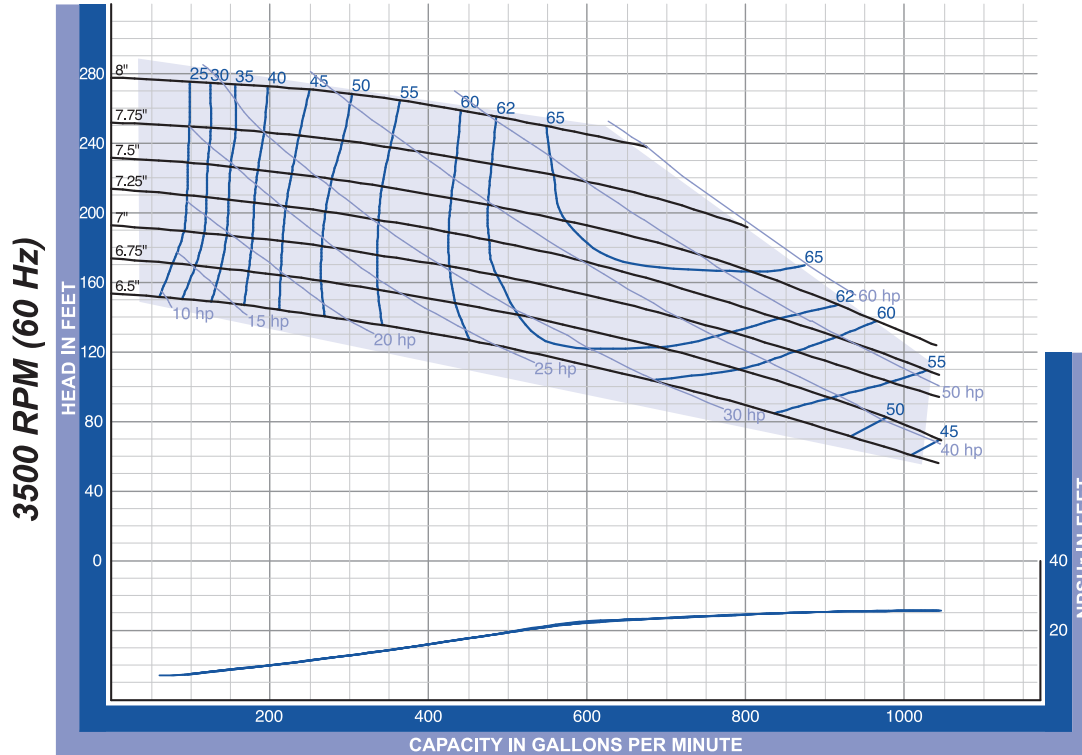
QC - 328 Inlet 4" x Outlet 2". The curves are based testing water at 70° F and have a tolerance of $\pm 5\%$ applicable to all of them. For different operation conditions please contact us. The impeller diameter is in inches.





QC 4410 4.0" x 4.0" Standard Inlet

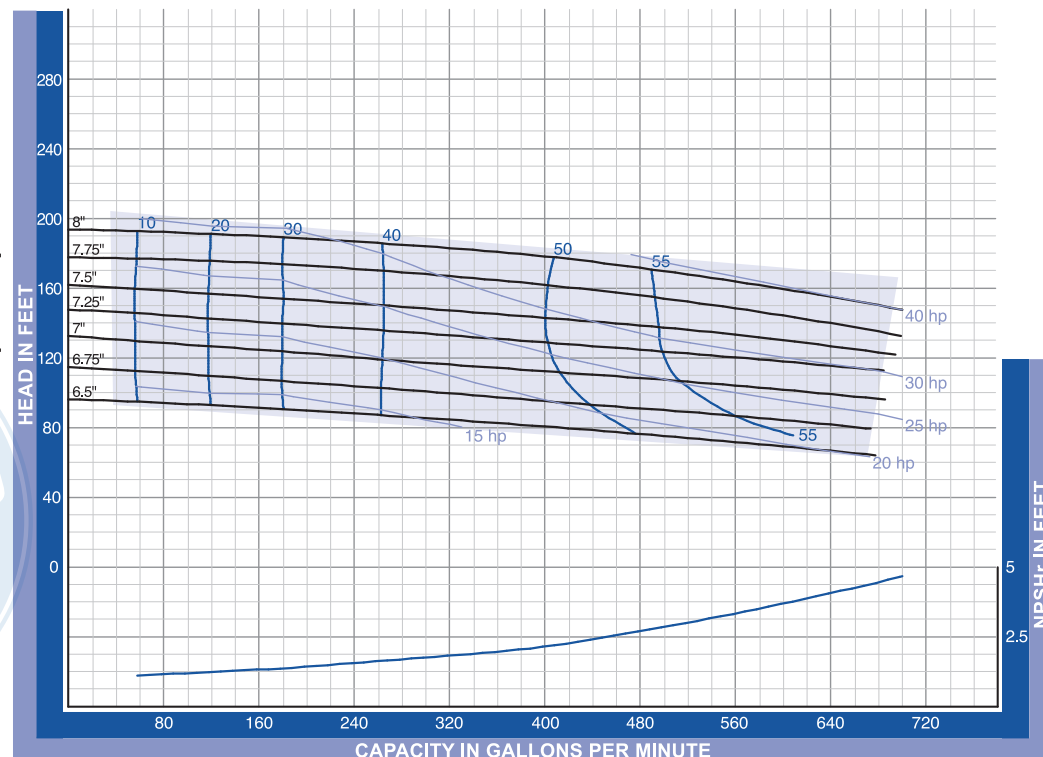
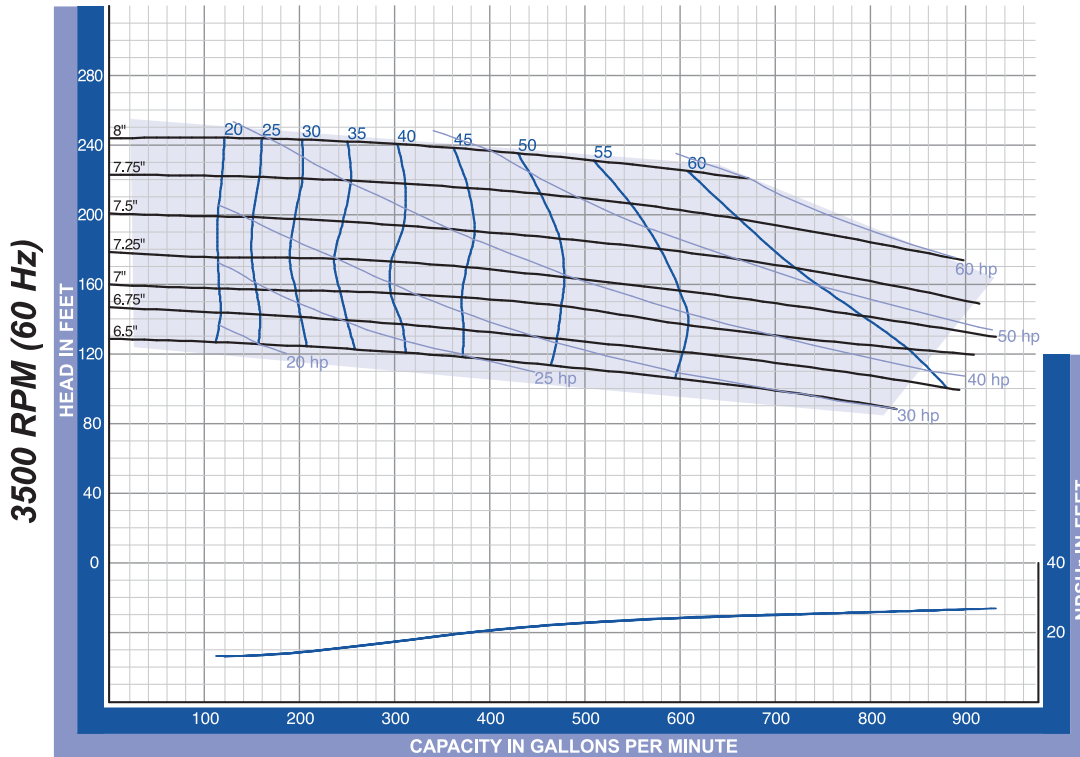
QC - 4410 Inlet 4" x Outlet 4". The curves are based testing water at 70° F and have a tolerance of $\pm 5\%$ applicable to all of them. For different operation conditions please contact us. The impeller diameter is in inches.





QC 4410 6.0" x 4.0" Enlarged Inlet

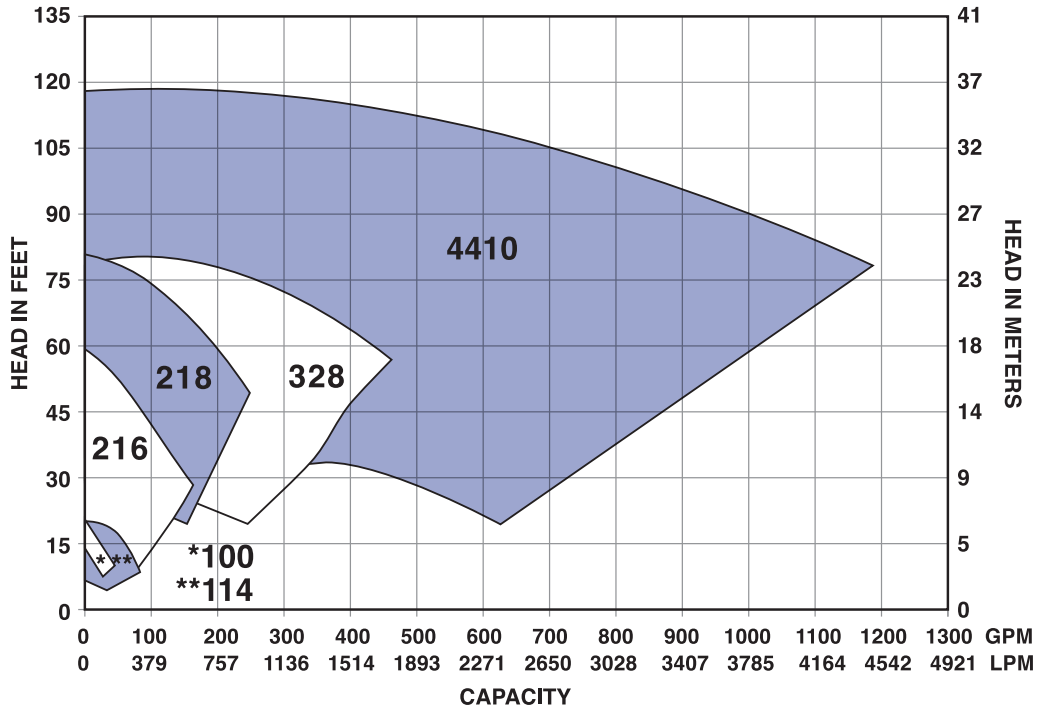
QC- 4410 Inlet 6" x Outlet 4". The curves are based testing water at 70° F and have a tolerance of $\pm 5\%$ applicable to all of them. For different operation conditions please contact us. The impeller diameter is in inches.



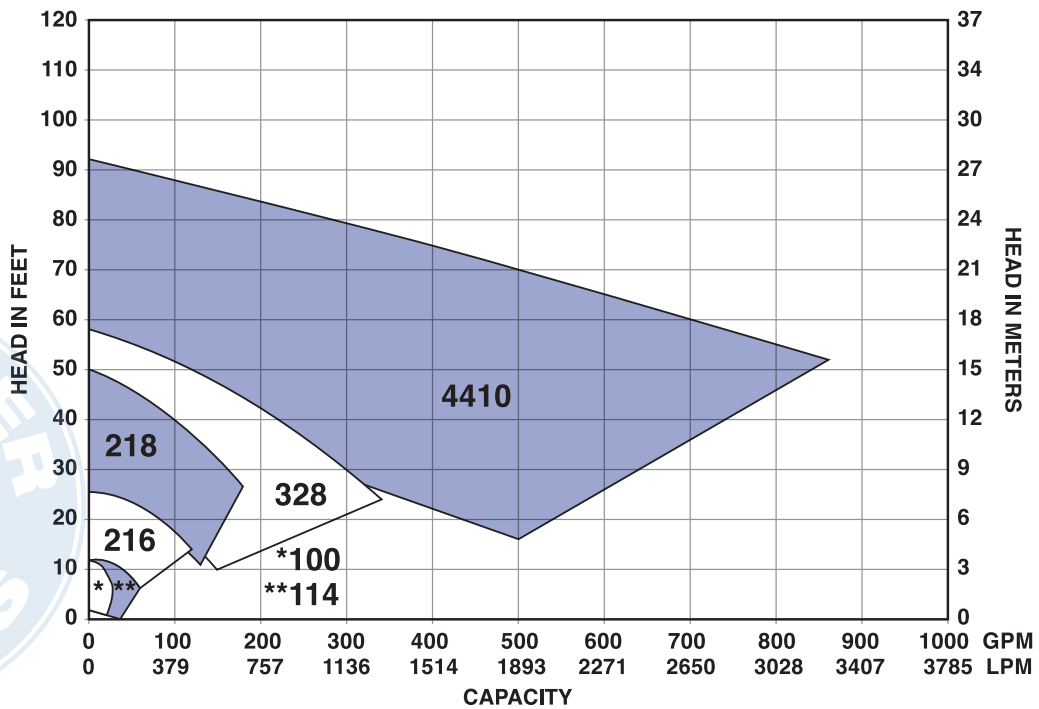


COMPOSITE CURVES

QC 1750 RPM



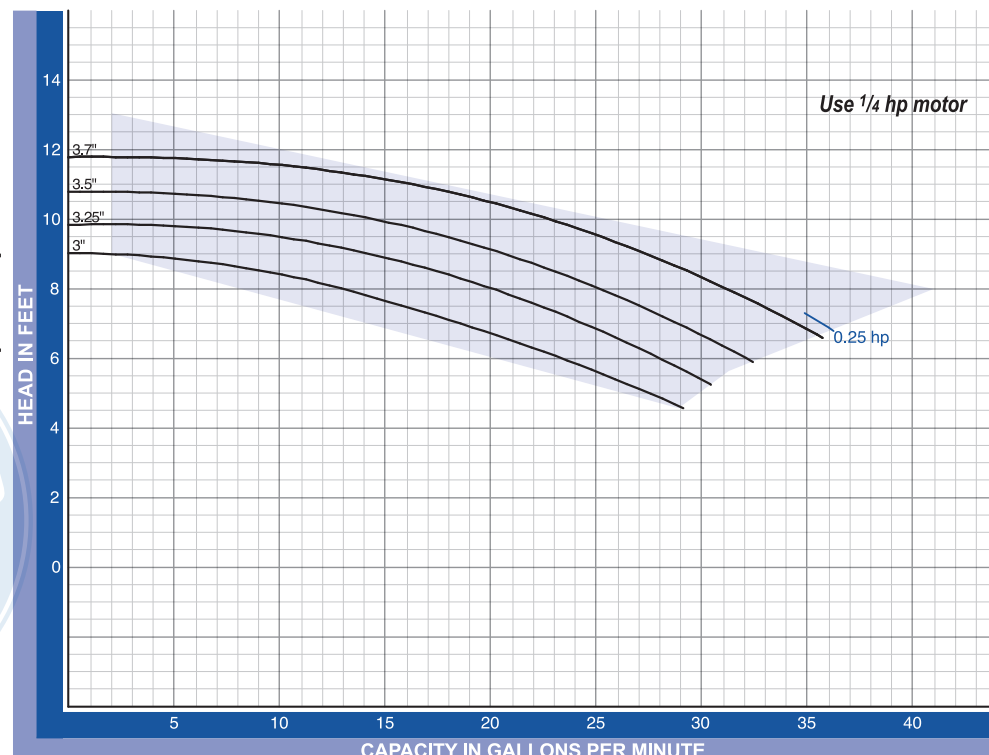
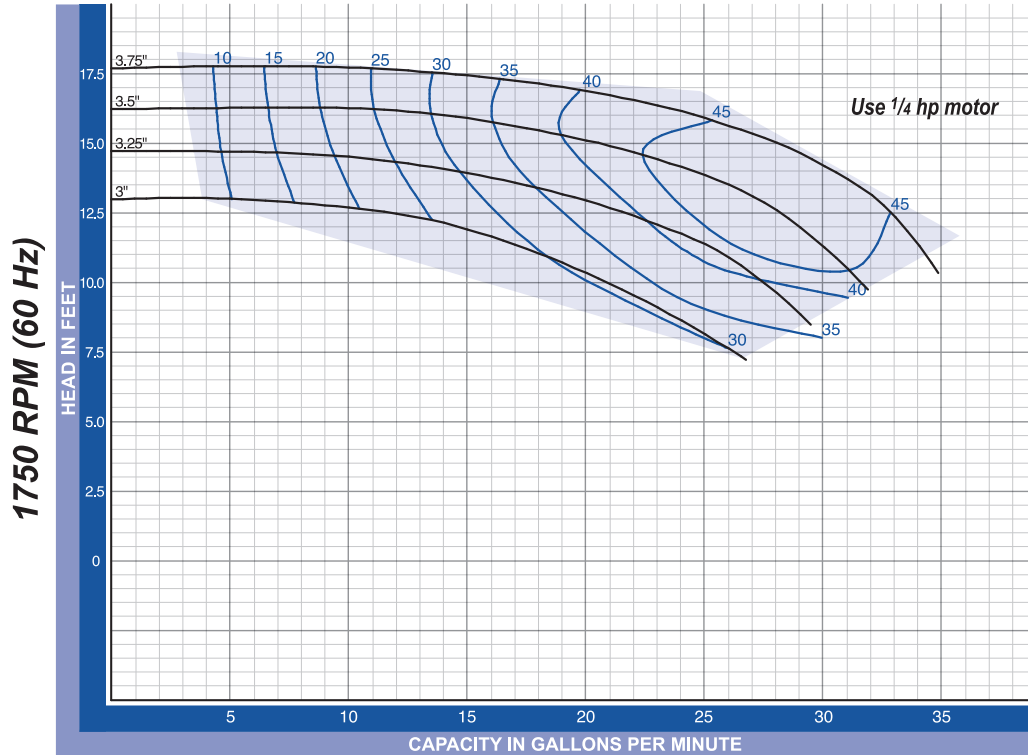
QC 1450 RPM





QC 100 1.5" x 1.0" Standard Inlet

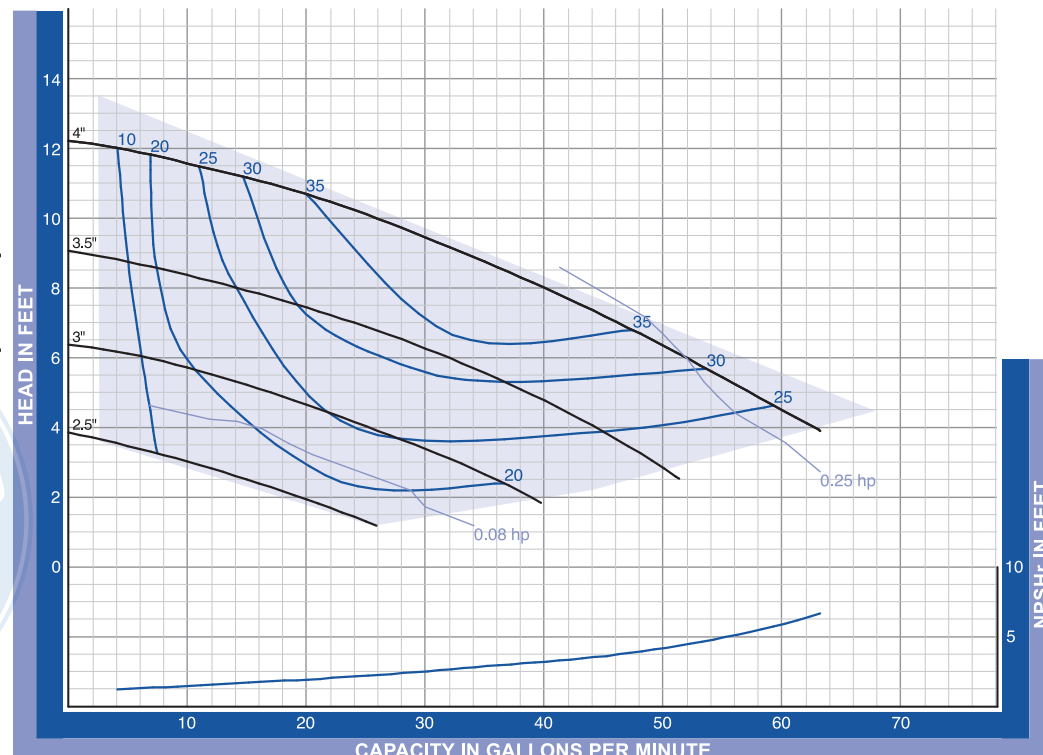
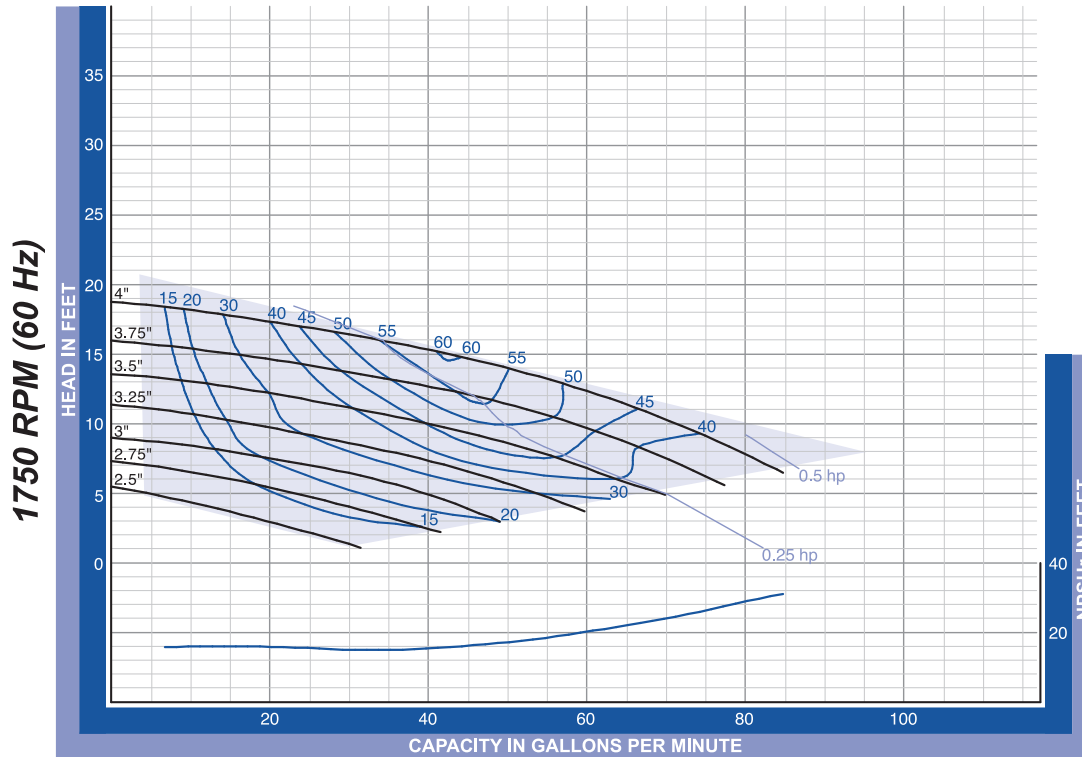
QC - 100 Inlet 1 1/2" x Outlet 1". The curves are based testing water at 70° F and have a tolerance of ±5% applicable to all of them. For different operation conditions please contact us. The impeller diameter is in inches.





QC 114 1.5" x 1.5" Standard Inlet

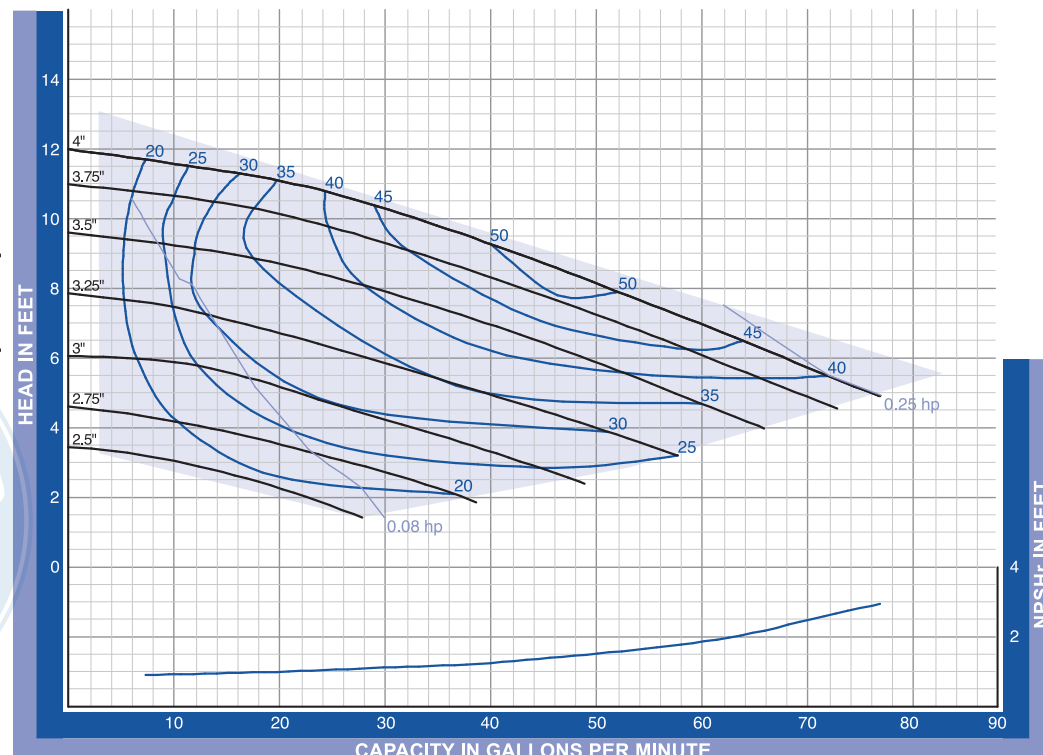
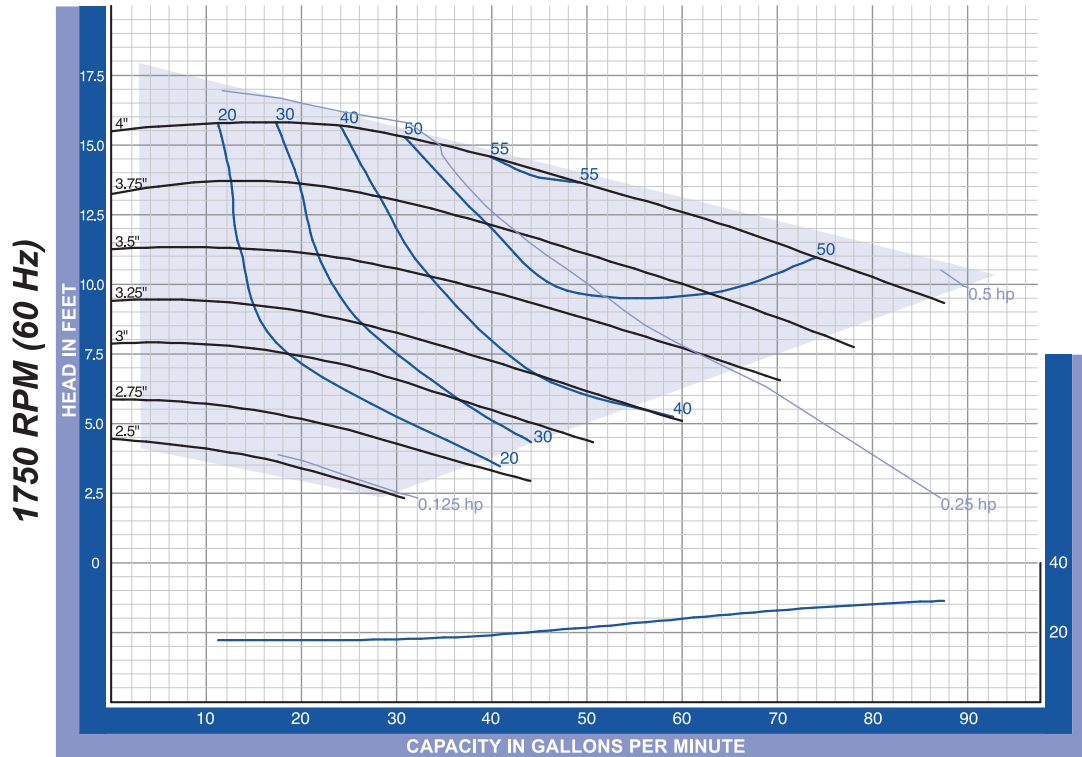
QC - 114 Inlet 1 1/2" x Outlet 1 1/2". The curves are based testing water at 70° F and have a tolerance of ±5% applicable to all of them. For different operation conditions please contact us. The impeller diameter is in inches.





QC 114 2.0" x 1.5" Enlarged Inlet

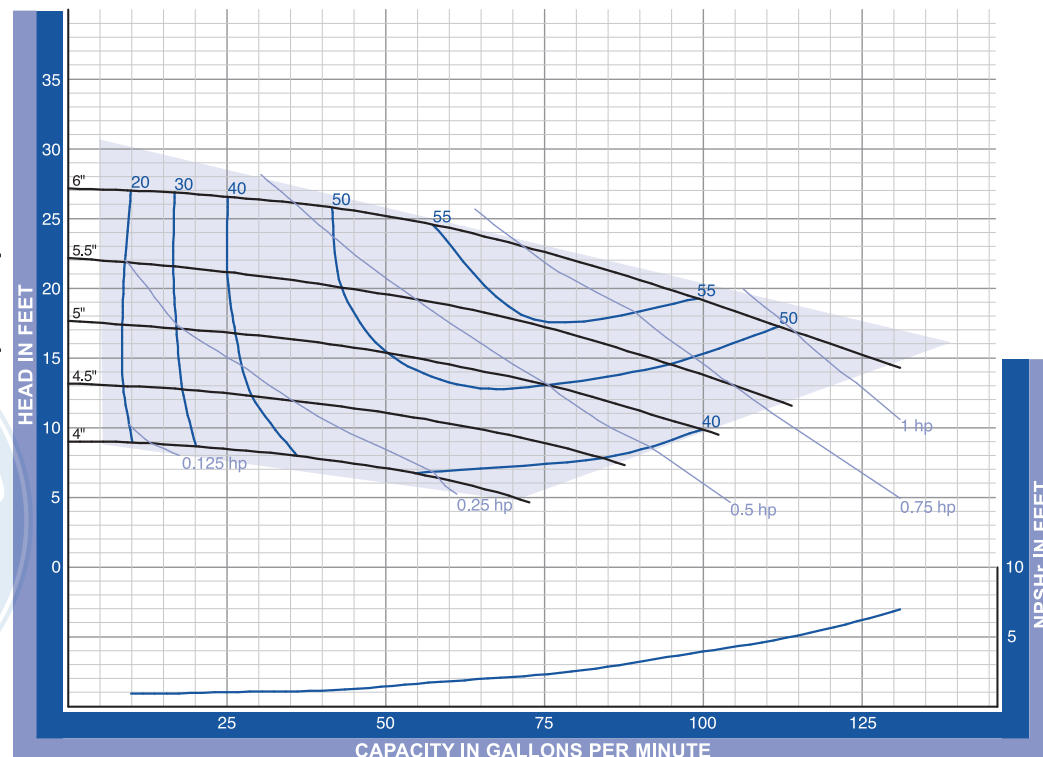
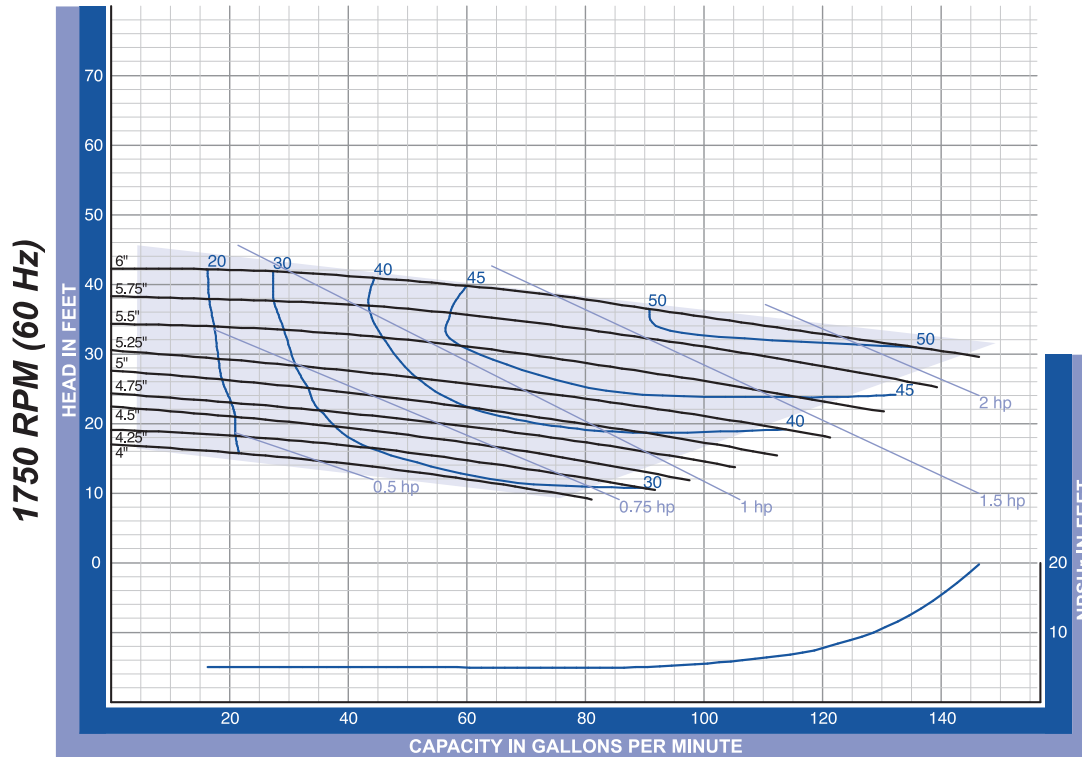
QC - 114 Inlet 2" x Outlet 1 1/2". The curves are based testing water at 70° F and have a tolerance of $\pm 5\%$ applicable to all of them. For different operation conditions please contact us. The impeller diameter is in inches.





QC 216 2.0" x 1.5" Standard Inlet

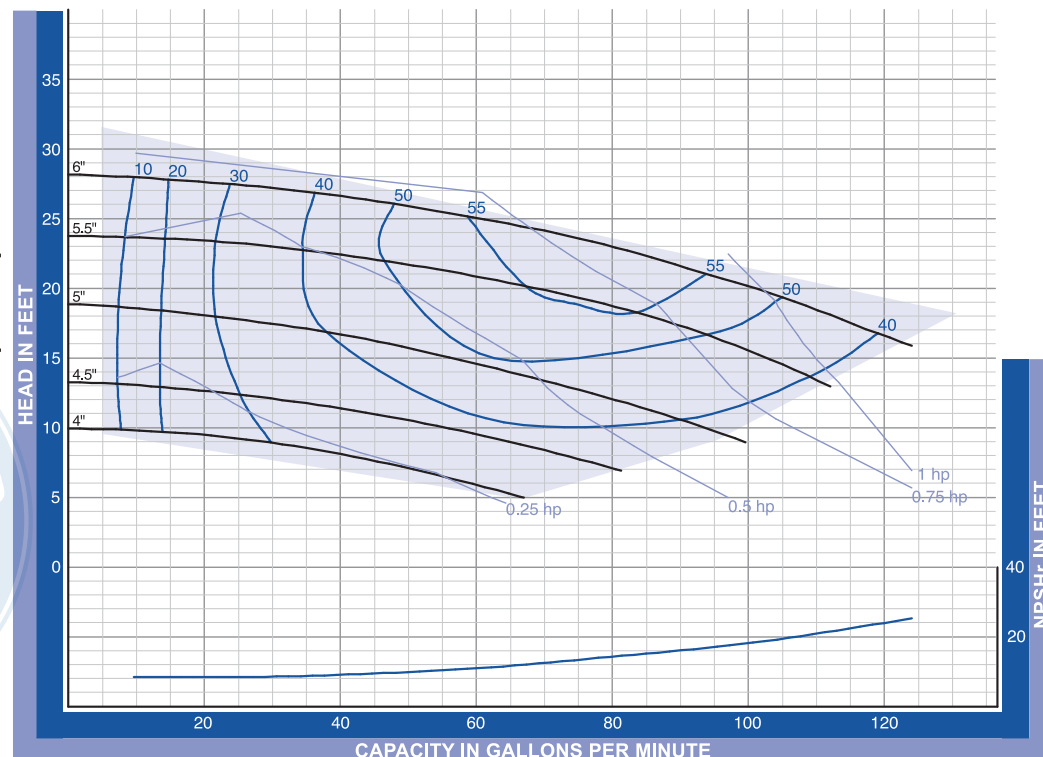
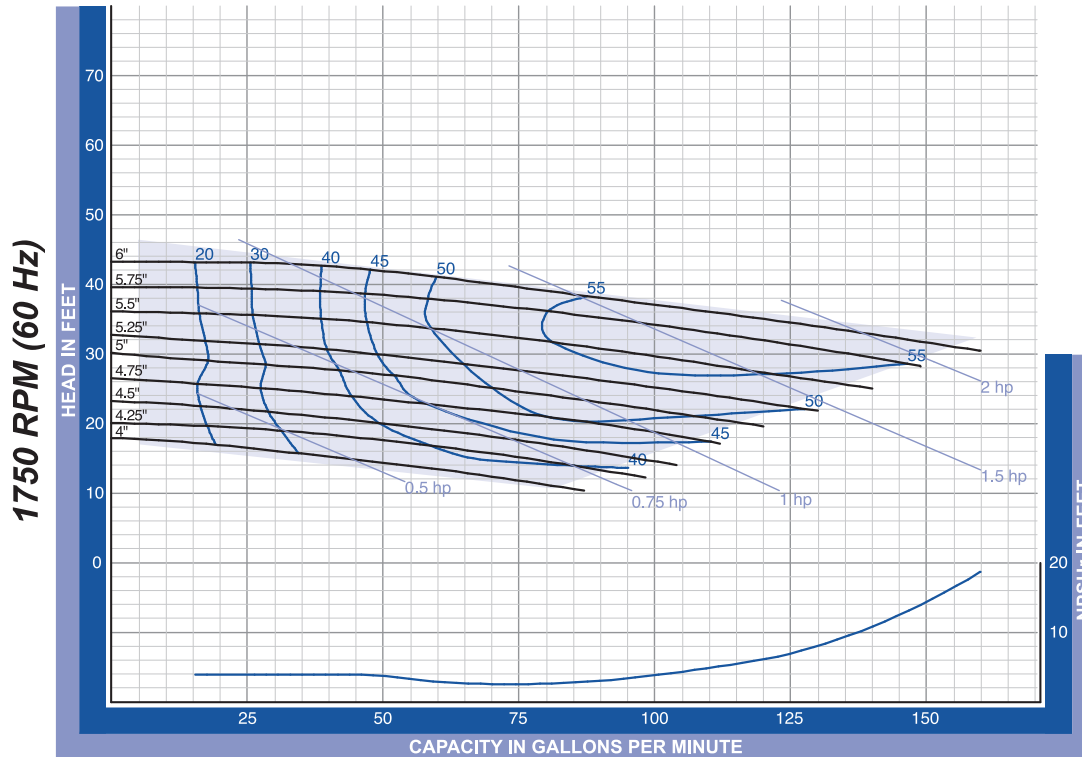
QC - 216 Inlet 2 " x Outlet 1½". The curves are based testing water at 70° F and have a tolerance of ±5% applicable to all of them. For different operation conditions please contact us. The impeller diameter is in inches.





QC 216 2.5" x 1.5" Enlarged Inlet

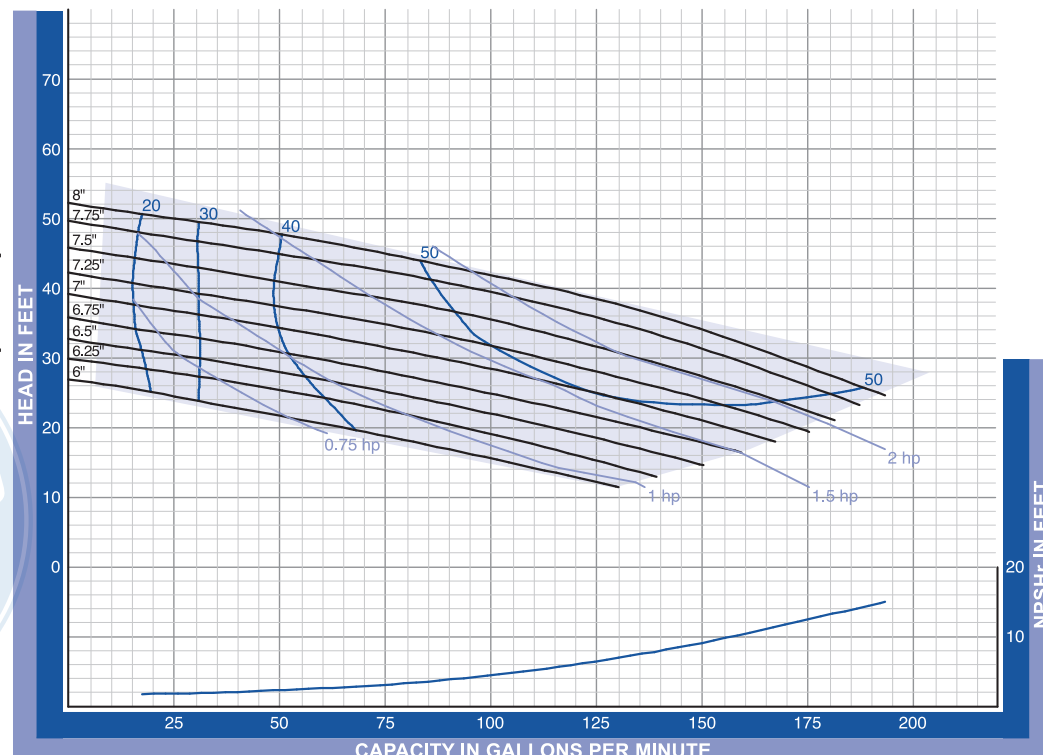
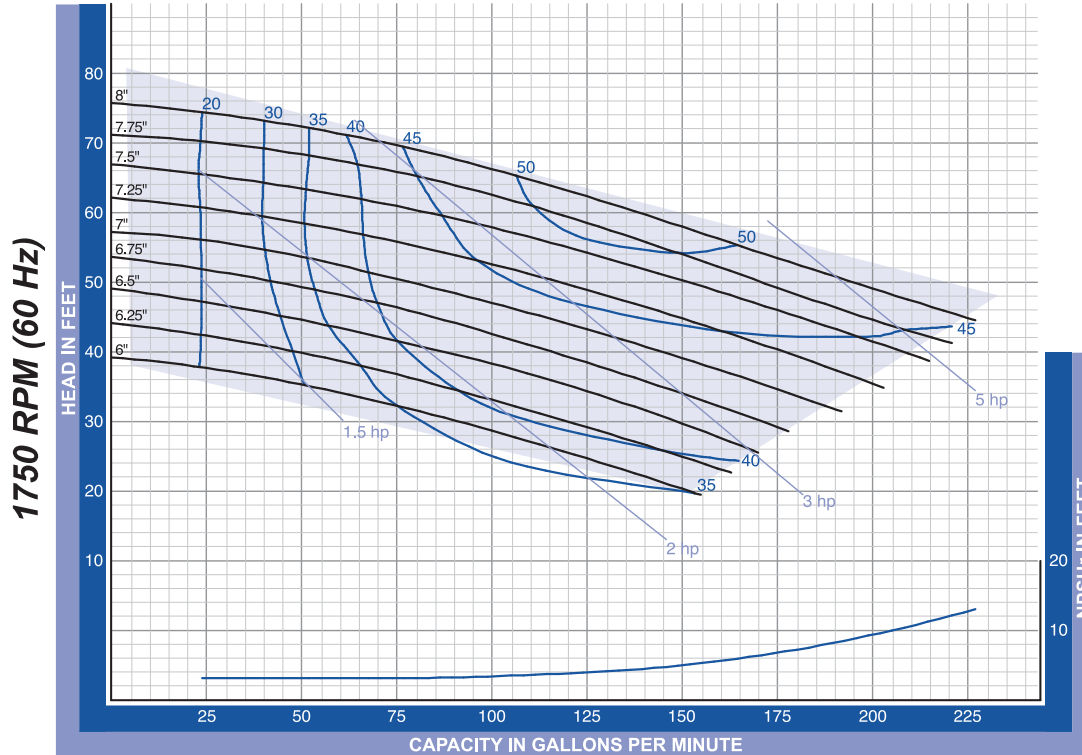
QC - 216 Inlet 2 1/2" x Outlet 1 1/2". The curves are based testing water at 70° F and have a tolerance of ±5% applicable to all of them. For different operation conditions please contact us. The impeller diameter is in inches.





QC 218 2.0" x 1.5" Standard Inlet

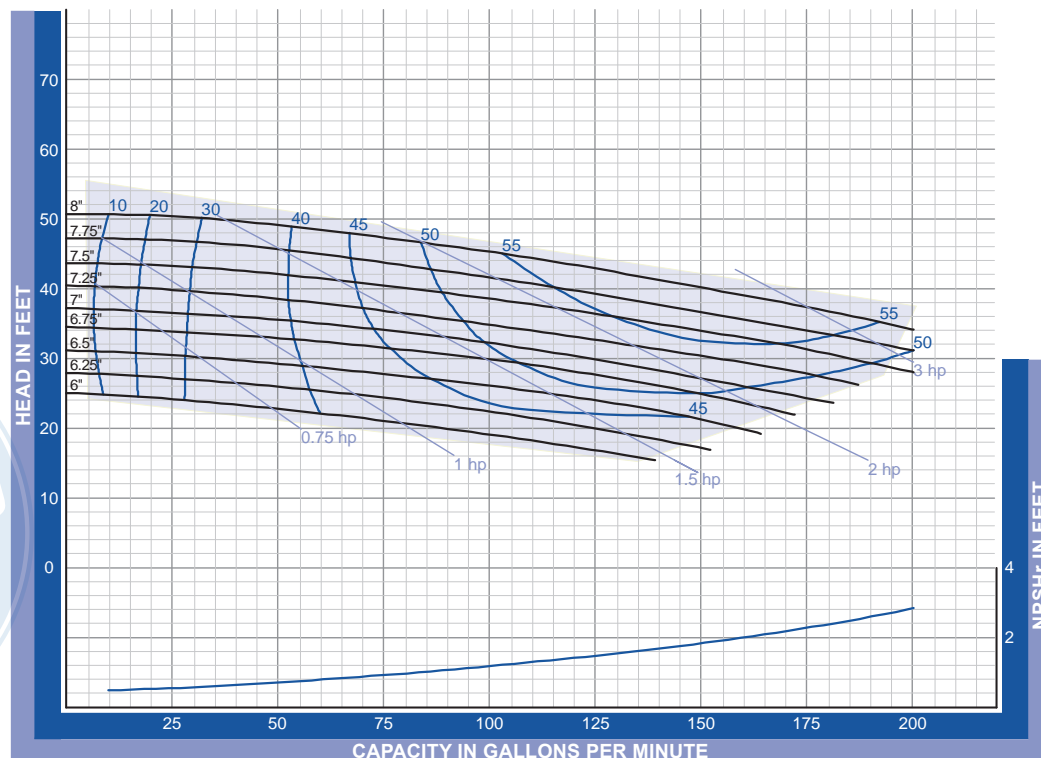
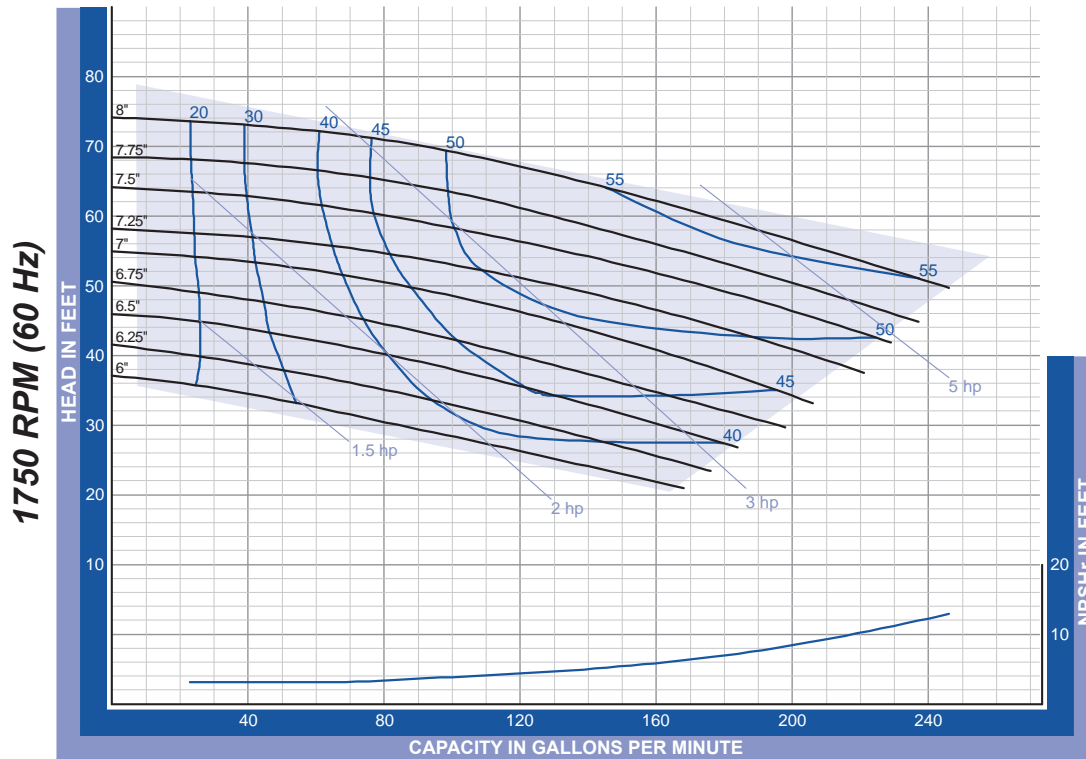
QC - 218 Inlet 2" x Outlet 1 1/2". The curves are based testing water at 70° F and have a tolerance of $\pm 5\%$ applicable to all of them. For different operation conditions please contact us. The impeller diameter is in inches.





QC 218 3.0" x 1.5" Enlarged Inlet

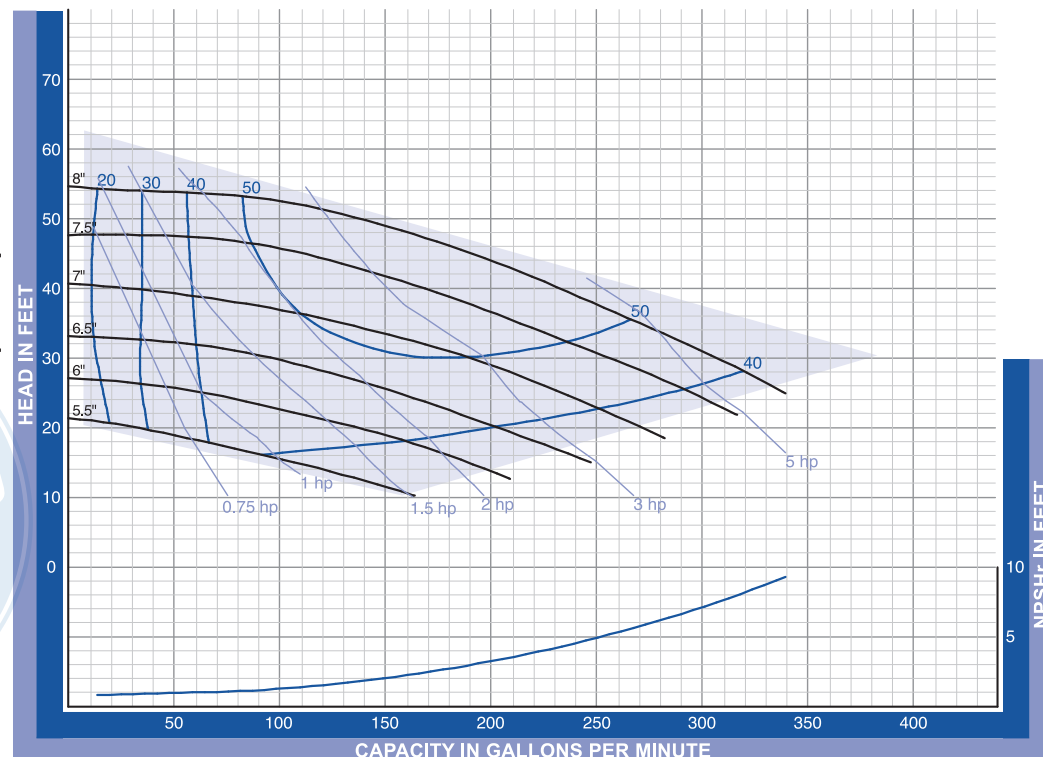
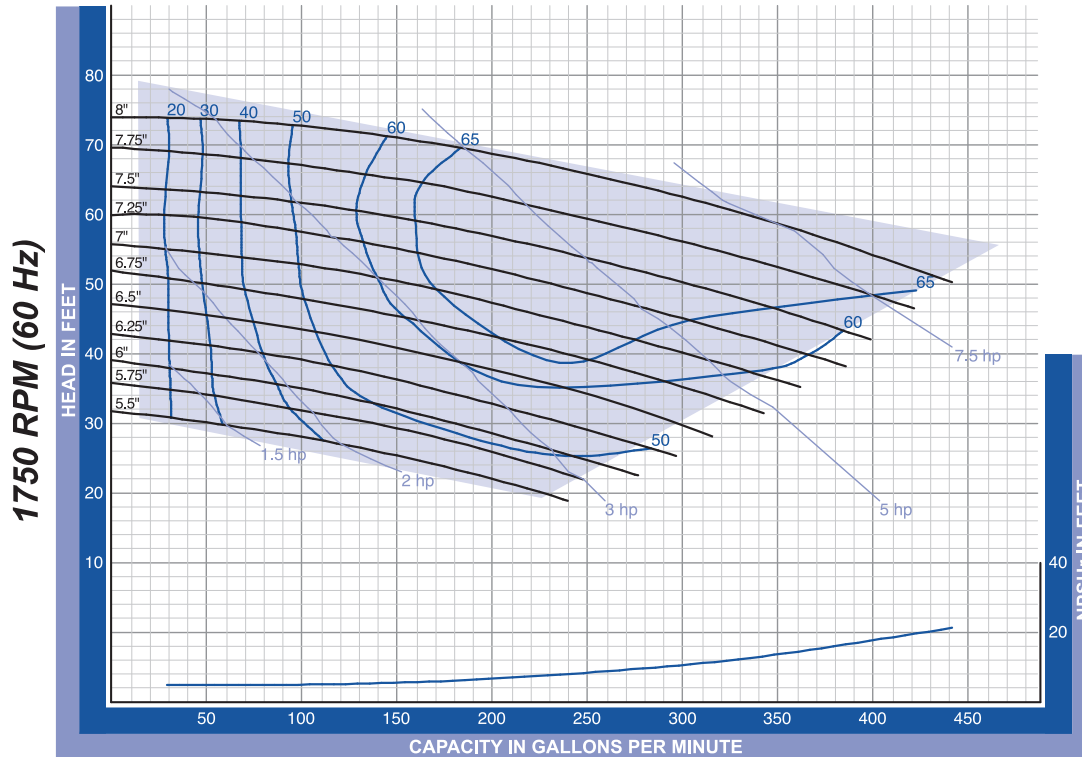
QC - 218 Inlet 3" x Outlet 1 1/2". The curves are based testing water at 70° F and have a tolerance of ±5% applicable to all of them. For different operation conditions please contact us. The impeller diameter is in inches.





QC 328 3.0" x 2.0" Standard Inlet

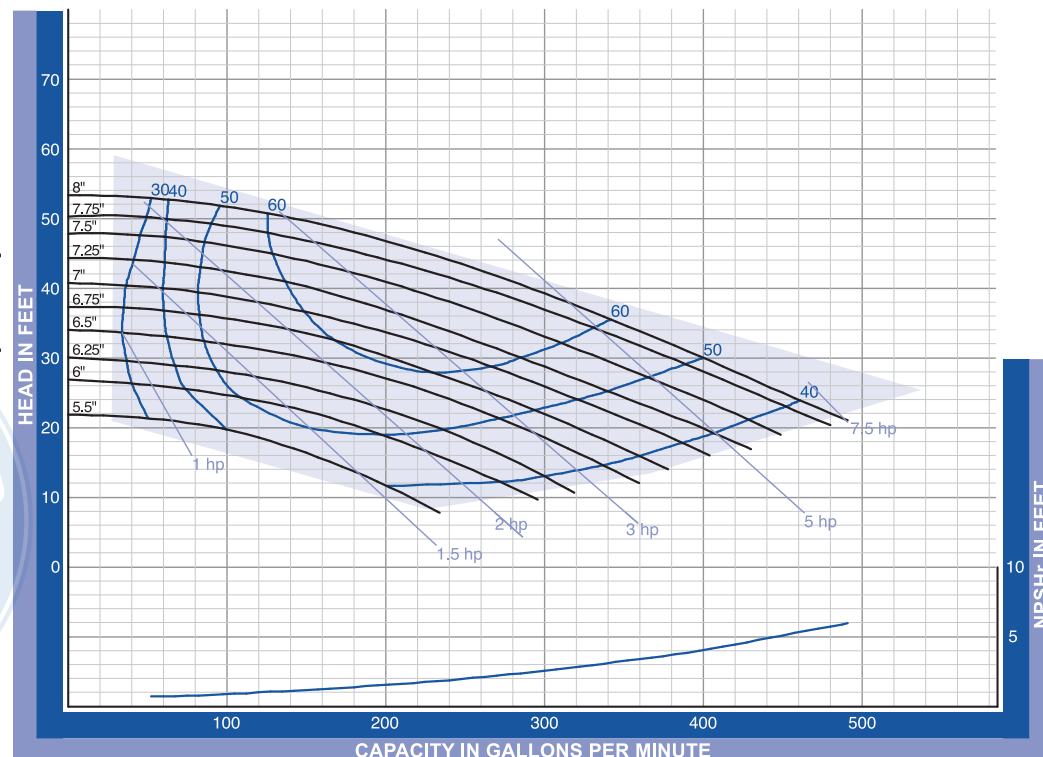
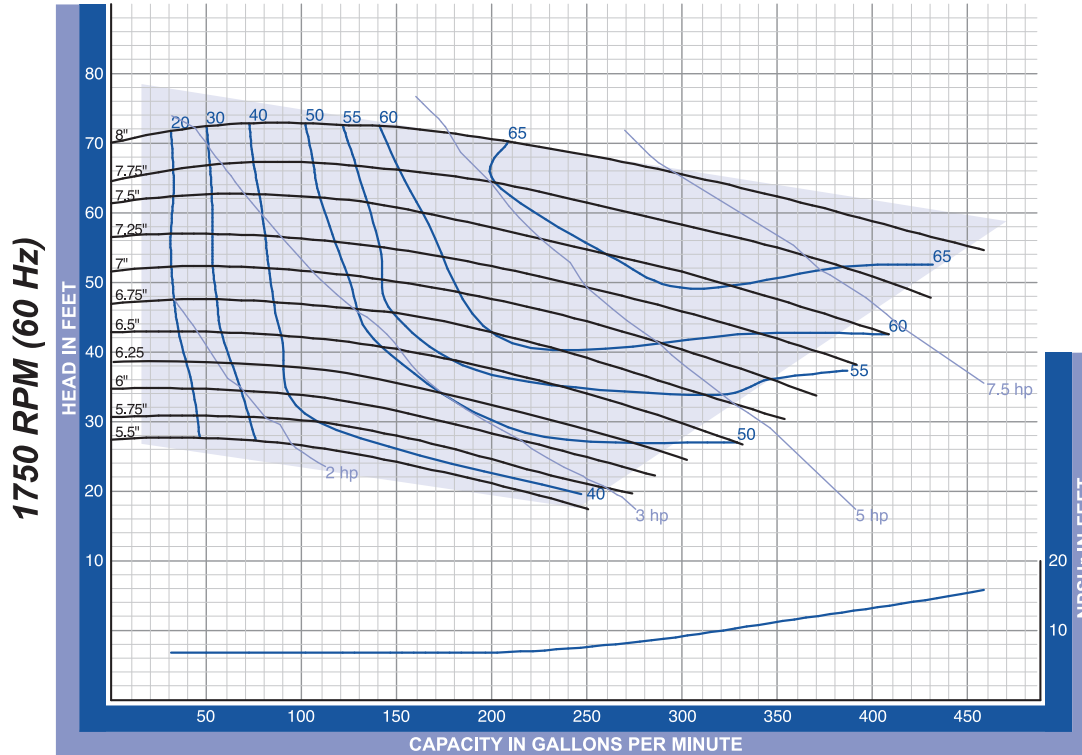
QC - 328 Inlet 3" x Outlet 2". The curves are based testing water at 70° F and have a tolerance of $\pm 5\%$ applicable to all of them. For different operation conditions please contact us. The impeller diameter is in inches.





QC 328 4.0" x 2.0" Enlarged Inlet

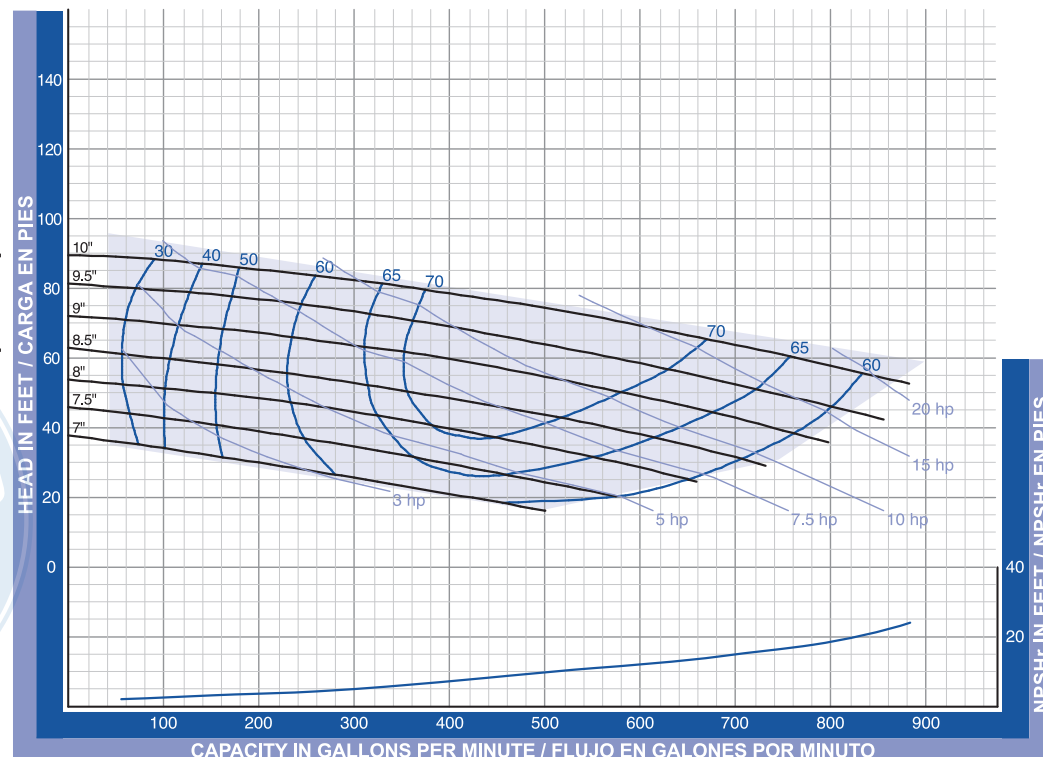
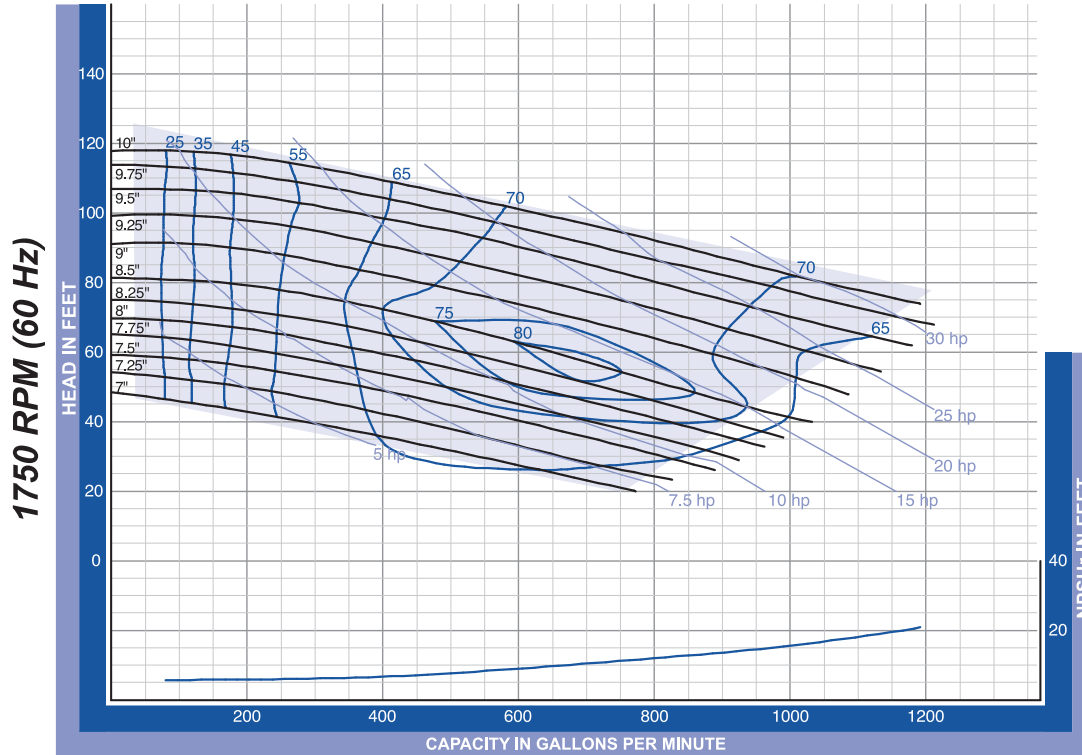
QC - 328 Inlet 4" x Outlet 2". The curves are based testing water at 70° F and have a tolerance of $\pm 5\%$ applicable to all of them. For different operation conditions please contact us. The impeller diameter is in inches.





QC 4410 4.0" x 4.0" Standard Inlet

QC - 4410 Inlet 4" x Outlet 4". The curves are based testing water at 70° F and have a tolerance of $\pm 5\%$ applicable to all of them. For different operation conditions please contact us. The impeller diameter is in inches.





QC 4410 6.0" x 4.0" Enlarged Inlet

QC - 210 Inlet 6" x Outlet 4". The curves are based testing water at 70° F and have a tolerance of ±5% applicable to all of them. For different operation conditions please contact us. The impeller diameter is in inches.

