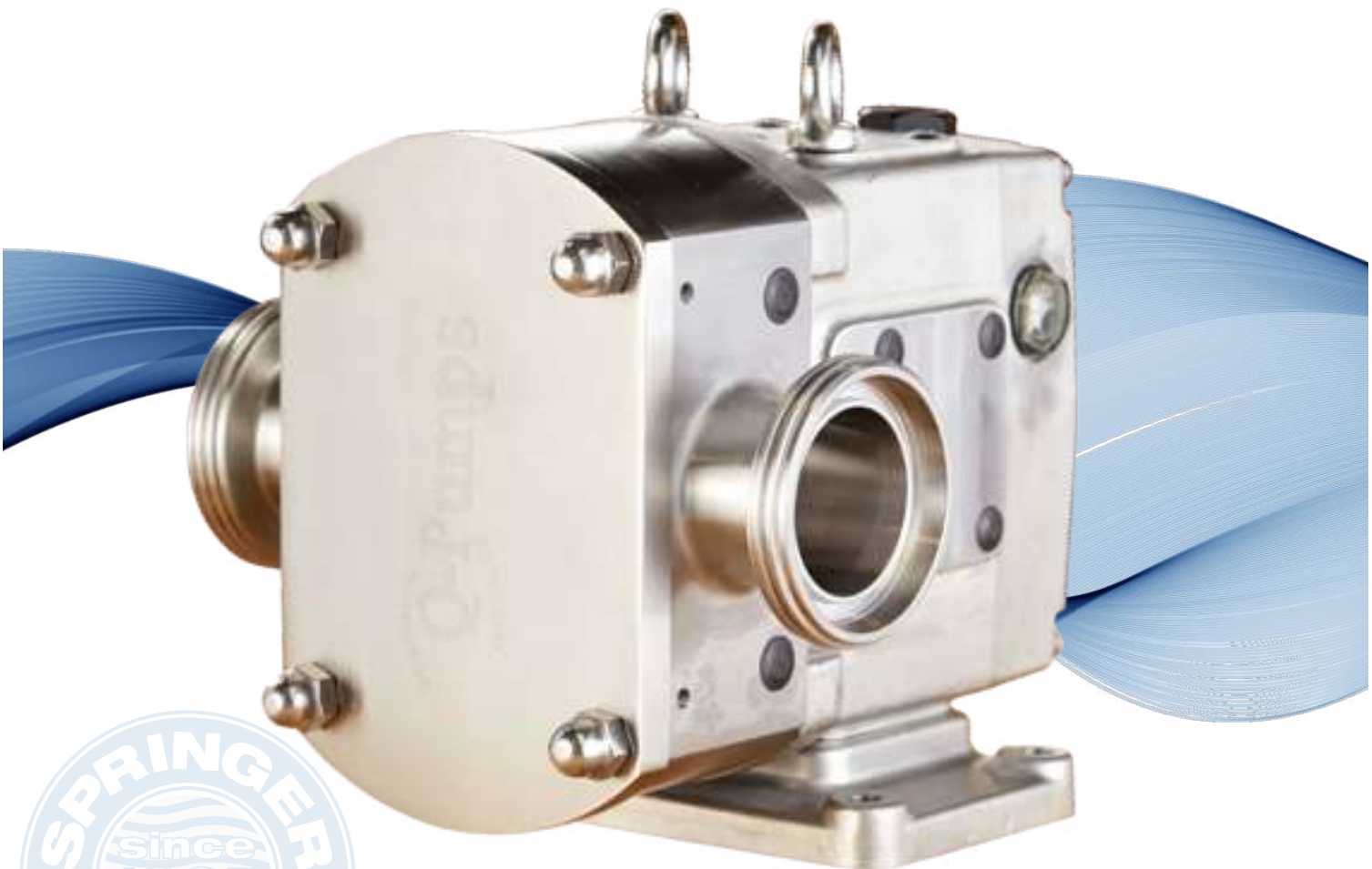


# QL SERIES



HIGH PERFORMANCE LOBULAR PUMPS



# QL SERIES



The QL heavy duty Lobular pumps are developed for viscous products, have both European certifications (EHEDG) as American (3A) to work in the food industry, cosmetics and pharmaceutical



441 GPM / 1,670 LPM



hasta 1,000,000 cP



209 psi / 20 bar  
670 ft / 204 m



150 °C / 302 °F

## CHARACTERISTICS

Ease of maintenance, economic price and CIP performance are key features of the QL positive displacement pump. Its seal located in the frontal load allows that it is of easy cleaning and reduces times of sustenance: with only remove the frontal cover, both rotors and stamps are accessible without disconnecting the line of the process.



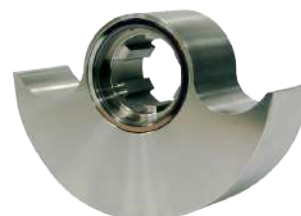
This series has a high level of performance and versatility, since it has different types of rotors according to the nature of the product to be pumped.



**Tri-Lobular Rotor**



**Bi-Wing Rotor**

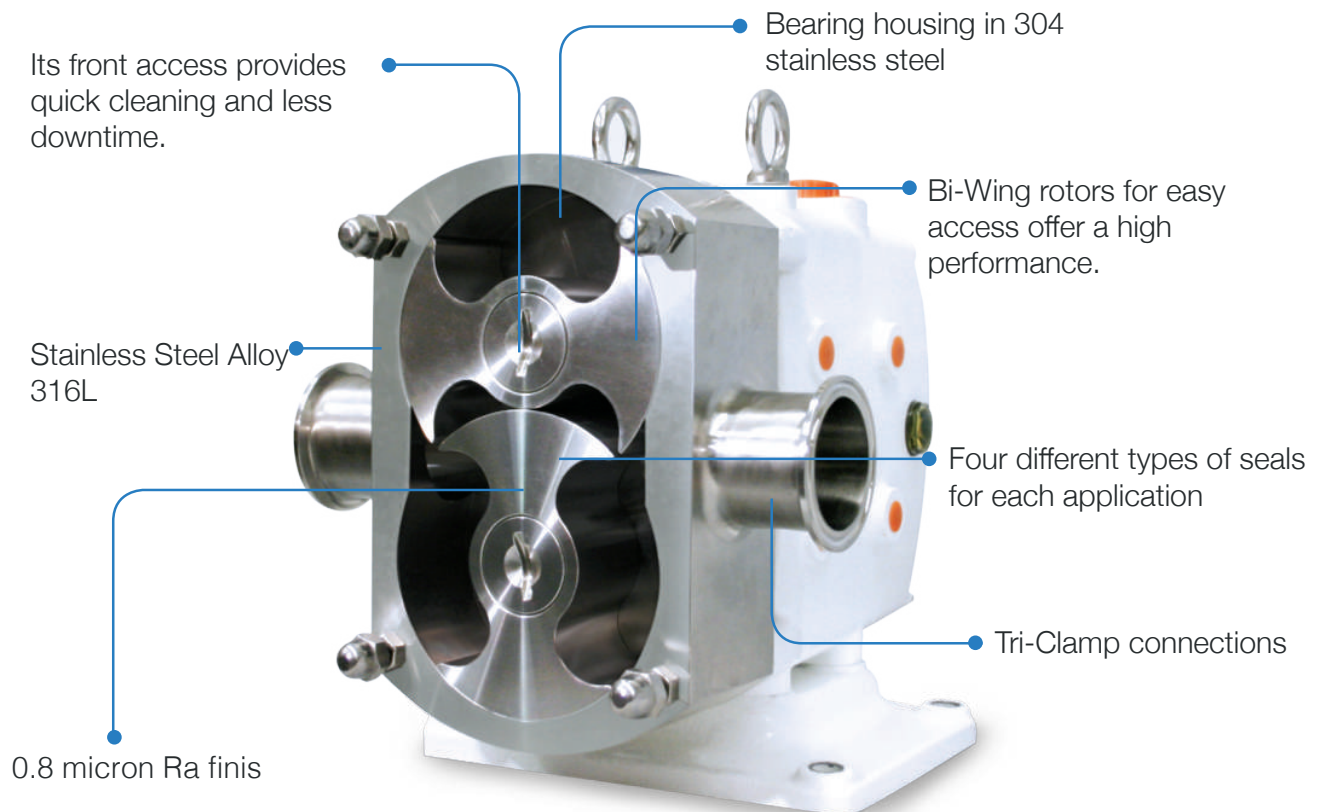


**Single-Wing Rotor**



**Helicoidal Rotor**

## QUALITY AND UNPARALLELED VERSATILITY



## ADVANTAGES

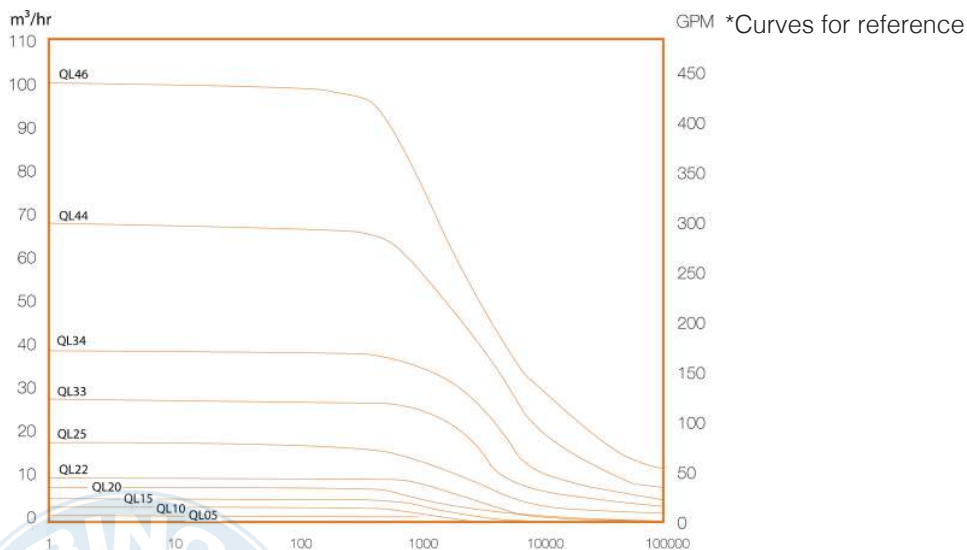
- The motor or the front cover can be supplied with thermal covers for temperature control
- The wet parts can be hardened for the handling of abrasive products
- There are specially designed pumps for tank cars (pipes)
- Thanks to its modular design it can be changed to double seal in a simple way



# QL SERIES

## HIGH PERFORMANCE LOBULAR PUMPS

| QL Series | Model        | DISPLACEMENT |        |       | Size of Standar Connection |     | Differential pressure maximum |     | Maximum speed<br>Rev / min |
|-----------|--------------|--------------|--------|-------|----------------------------|-----|-------------------------------|-----|----------------------------|
|           |              | L / rev.     | LPM    | GPM   | mm                         | in. | Bar                           | PSI |                            |
| 100       | QL110-005-20 | 0.050        | 50.0   | 13.2  | 25                         | 1.0 | 20.7                          | 300 | 1000                       |
|           | QL115-012-12 | 0.120        | 96.0   | 25.4  | 38                         | 1.5 | 12.1                          | 175 | 800                        |
|           | QL120-021-08 | 0.210        | 168.0  | 44.4  | 51                         | 2.0 | 7.9                           | 115 | 800                        |
| 200       | QL220-040-12 | 0.410        | 287.0  | 75.8  | 51                         | 2.0 | 12.1                          | 175 | 700                        |
|           | QL225-062-08 | 0.620        | 434.0  | 114.7 | 64                         | 2.5 | 7.9                           | 115 | 700                        |
| 300       | QL330-102-12 | 1.020        | 612.0  | 161.7 | 76                         | 3.0 | 12.1                          | 175 | 600                        |
|           | QL340-144-08 | 1.440        | 864.0  | 228.3 | 102                        | 4.0 | 7.9                           | 115 | 600                        |
| 400       | QL440-227-12 | 2.270        | 1135.0 | 299.9 | 102                        | 4.0 | 12.1                          | 175 | 500                        |
|           | QL450-334-08 | 3.340        | 1670.0 | 441.2 | 152                        | 6.0 | 7.9                           | 115 | 500                        |



Distributed by:



For more information visit:

[www.qpumps.com](http://www.qpumps.com)

or call us at +52 (442) 103 31 00

Website: [www.springerpumps.com](http://www.springerpumps.com)

Int'l: +001 267 404 2910

Tel: 866-777-6060

Fax: 866-777-6383

Springer Pumps, LLC